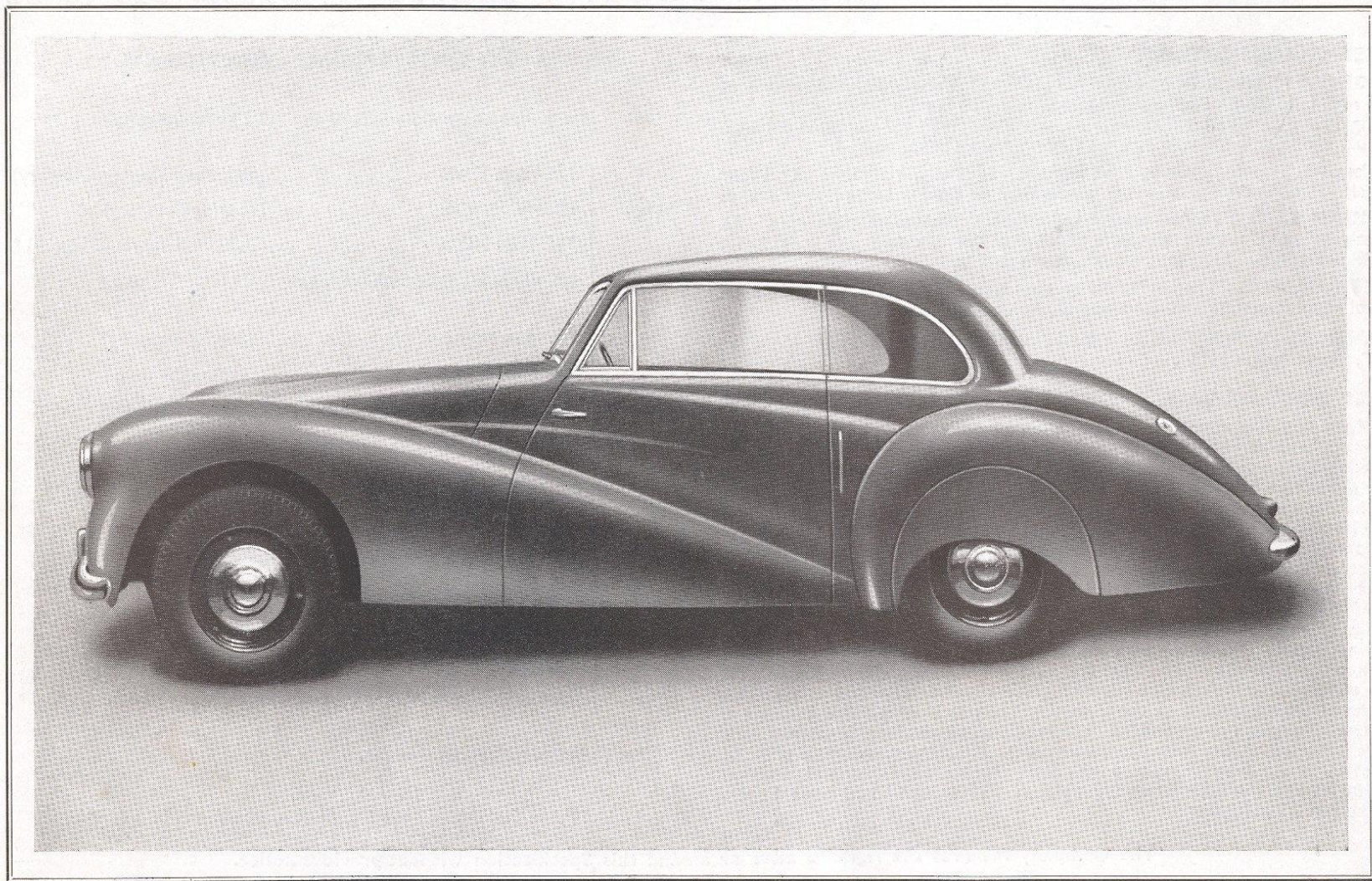


5/

2.4 litre HEALEY TICKFORD 2-DOOR 4-LIGHT SPORTS SALOON



HEALEY TICKFORD 2-DOOR 4-LIGHT SPORTS SALOON

2.4 litre HEALEY TICKFORD 2-DOOR 4-LIGHT SPORTS SALOON

BRIEF CHASSIS DETAILS.

ENGINE. Manufactured by RILEY MOTORS Ltd. Four-cylinder in line. Bore 80.5 mm. (3.16 ins.) x Stroke 120 mm. (4.7 ins). 2,443 c.c. (140 cu. ins.) R.A.C. rating 1607 hp. **Carburation.**—Two horizontal "H4" SU Carburettors with manual choke and throttle control. **Rear Axle Ratio.**—3.50-1.

Brakes.—11" front, Lockheed 2 leading shoe, 10" rear. Hydraulic on all four wheels. Hand brake operates rear wheels only via cables. Large ribbed drums.

WHEELS AND TYRES.—Special Light Disc Wheels-extra wide base. All wheels balanced. **Tyre Equipment.**—Extra low pressure size 5.75 x 15.

FUEL SYSTEM. 13 gallon rear mounted petrol tank.

INSTRUMENTS. 5" x 120 M.P.H. Speedometer. Oil pressure gauge, electrical petrol gauge, water temperature gauge. Revolution Counter.

PRINCIPAL DIMENSIONS. Wheel Base 8' x 6', Track (front) 4' 6" x Rear 4' 5", overall length 14' 0".

BRIEF BODY DETAILS.

The body shell is of coachbuilt construction with composite framing of best Ash, all woodwork treated with tropical wood preservative. Rear of body incorporates large luggage boot, the boot lid fitted with patent Tickford spring assisted joints, special attention being given to the exclusion of dust. Spare wheel, tyre and tools are located in a separate compartment beneath the luggage boot. Aluminium used for all body panels wings and bonnet, doors carried on concealed hinges and fitted with chromium plated window frames with controlled ventilating windows at the forward ends, the door glasses operated in felt lined channels. Fixed quarter windows in chromium plated framed surrounds, rear window of Triplex curved Safety Glass. All side windows fitted with Triplex Safety Glass. Fixed one-piece windscreen also fitted with Triplex Safety Glass. Dual silent windscreen wipers. Adjustable front seats of tubular construction, with hinged backrests to give easy access to the rear seat which is full width and fitted with side armrests. Upholstery of superior grade leather. Pile carpets with felt underlays. Ashtrays fitted for the convenience of both front and rear passengers. Interior light in roof controlled from the front seat. Doors, luggage compartment glove locker and petrol filler fitted with locks. Interior woodwork of polished figured Walnut. Rear wings fitted with detachable covers. Direction Indicators. Driving Mirror. All fittings chromium plated. Built in accommodation for radio and heater. Twin fog lamps.

A FEW OUTSTANDING ACHIEVEMENTS.

- 1947 Ist. Rallye International des Alpes (2/3 Litre Category)
- 1948 { Ist. Targa Florio (Unlimited Touring Category) *
Ist. Mille Miglia (Touring Category)
2nd. Mille Miglia (Unlimited Sports Category) *
Ist. Rallye International des Alpes (2/3 Litre Category)
- 1949 { Ist. Mille Miglia (Touring Category) *
4th. Mille Miglia (Touring Category)
Ist. Rallye International des Alpes (2/3 Litre Category) *
2nd. Rallye International des Alpes (2/3 Litre Category)
Team Prize.—Daily Express International
Trophy Race (Production Car Event)
- 1950 { Ist. Florida Race (U.S.A.) (3 Litre Category)
2nd. Florida Race (U.S.A.) (3 Litre Category)
2nd. Florida Race (U.S.A.) (General Classification) *
4th. Le Mans 24 hour Race (with Nash of Detroit engine).
Ist. Daily Express Production Car Race (3,000 c.c. class).

*Best Performance by a British Car.

Price £1,450 plus £403 10s. 7d. Purchase Tax. (Ex. Works).

The Company reserves the right to alter or amend this Specification without previous notice.