

The New



**2.4 LITRE TICKFORD 2-DOOR
4-LIGHT SPORTS SALOON**

BRIEF SPECIFICATION

CHASSIS

ENGINE. Four-cylinder in line. Bore 80.5 mm. (3.16 ins.) × Stroke 120 mm. (4.7 ins.), 2,443 c.c. (140 cu. ins.) R.A.C. rating 1607 h.p.
Carburation.—Two horizontal "H4" SU Carburettors with manual choke control. **Rear Axle Ratio**—3.50 : 1.

Brakes.—Hydraulic on all four wheels. Hand brake operates rear wheels only via cables. Large ribbed drums.

WHEELS AND TYRES.—Special Light Disc Wheels, extra wide base. All wheels balanced. **Tyre Equipment.**—Extra low pressure size 5.75 × 15.

FUEL SYSTEM. 14 gallon rear mounted petrol tank, including 1½ gallons reserve.

INSTRUMENTS. 5" × 120 M.P.H. Speedometer. Oil pressure gauge, electrical petrol gauge, water temperature gauge. Revolution Counter and Clock.

PRINCIPAL DIMENSIONS. Wheel Base 8' 6", Track (front) 4' 6" Rear 4' 5", overall length 14' 0".

BODY

The body shell is of coachbuilt construction with composite framing of best Ash, all woodwork treated with tropical wood preservative. Rear of body incorporates large luggage boot. Spare wheel, tyre and tools are located in a separate compartment beneath the luggage boot. Aluminium used for all body panels wings and bonnet, doors carried on concealed hinges and fitted with chromium plated window frames with controlled ventilating windows at the forward ends. Fixed one-piece windscreen also fitted with Triplex Safety Glass. Dual silent windscreen wipers. Adjustable front seats of tubular construction, with hinged backrests to give easy access to the rear seat which is full width and fitted with side armrests. Upholstery of superior grade leather. Interior woodwork of polished figured Walnut. Built in accommodation for radio and heater.

The Company reserves the right to alter or amend this Specification without previous notice.

DONALD HEALEY MOTOR CO. LTD., WARWICK, ENGLAND.

Phone : Warwick 676/7

SOLE CONCESSIONAIRES : BROOKLANDS OF BOND STREET LTD., 103, NEW BOND STREET, LONDON, W.1.

NOTABLE SUCCESSES

1947

1st Rallye Internationale des Alpes (2/3 Litre Category)

1948

1st Targa Florio (Unlimited Touring Category)*
1st Mille Miglia (Touring Category)
2nd Mille Miglia (Unlimited Sports Category)*
1st Rallye Internationale des Alpes (2/3 Litre Category)

1949

1st Mille Miglia (Touring Category)*
4th Mille Miglia (Touring Category)
1st Rallye Internationale des Alpes (2/3 Litre Category)*
2nd Rallye Internationale des Alpes (2/3 Litre Category)
Team Prize.—Daily Express International
Trophy Race (Production Car Event)

1950

1st Florida Race (U.S.A.) (3 Litre Category)
2nd Florida Race (U.S.A.) (3 Litre Category)
2nd Florida Race (U.S.A.) (General Classification)*
4th Le Mans 24 hour Race (with Nash of Detroit) engine.
1st Daily Express Production Car Race (3,000 c.c. class).

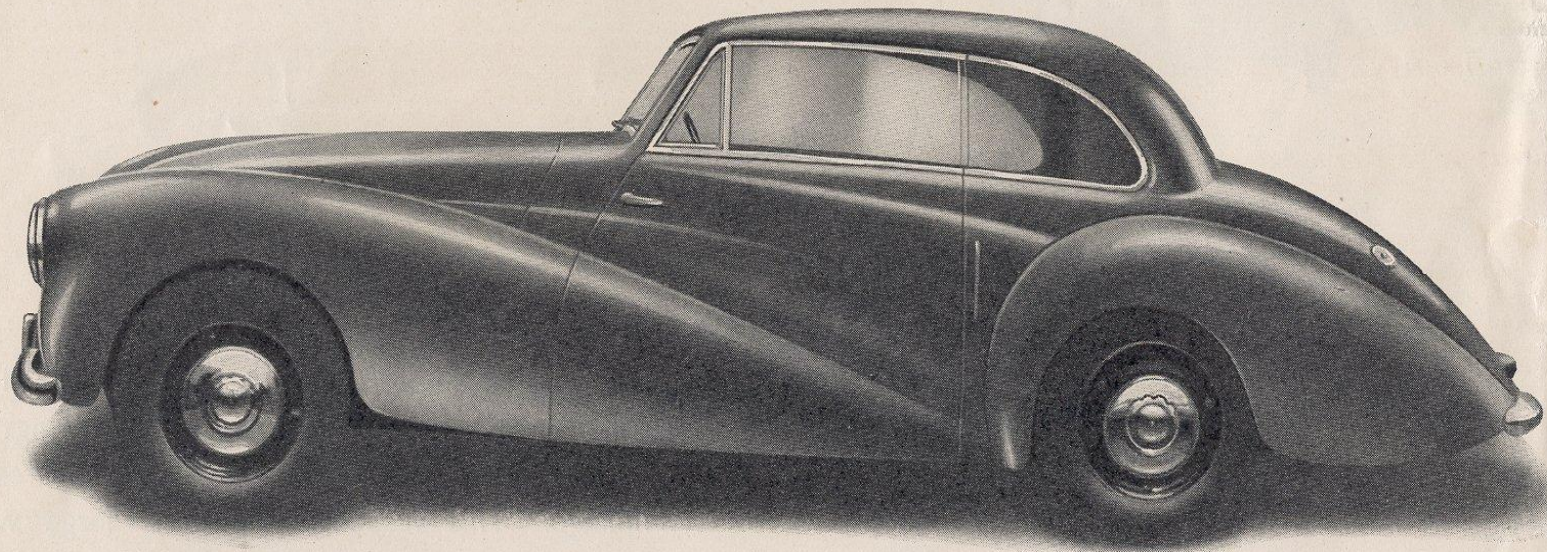
1951

2nd Mille Miglia (Unlimited Touring Category)
6th Le Mans 24 hour Race
Winner Coupe des Alpes
Rallye Internationale des Alpes

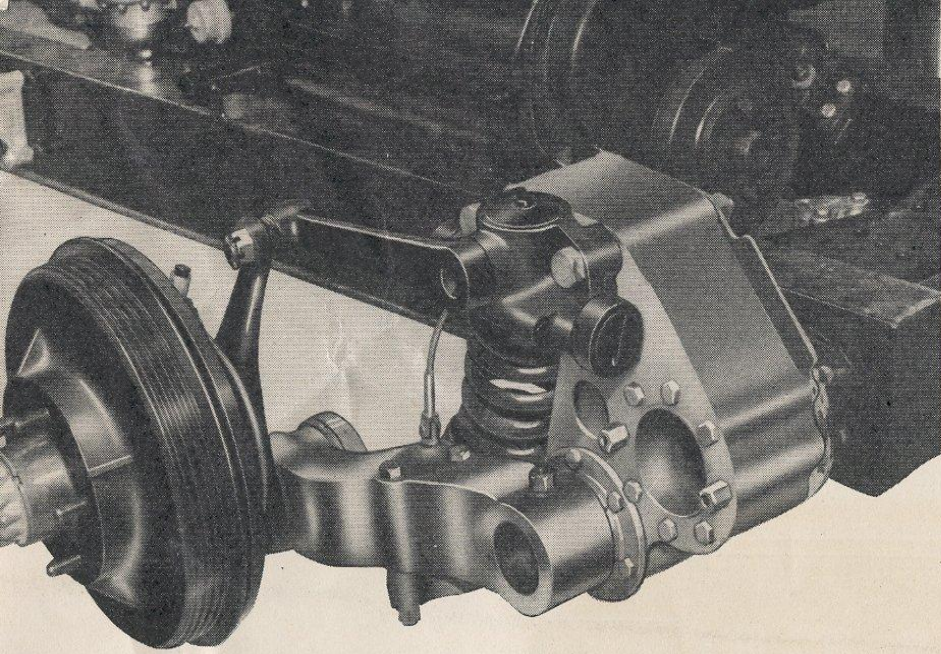
*Best Performance by a British Car.

Healey

A Car of Outstanding Achievement



THE 2.4 LITRE 2-DOOR 4-LIGHT TICKFORD SPORTS SALOON



FRONT SUSPENSION

Patented Healey trailing link, with large ball and roller bearings. Suspension by coil springs and Girling piston type dampers. Special steering linkage. This suspension permits large wheel movement without variation of castor or camber. Gives great stability at all speeds.