



Car club

COMMENTS FROM THE EDITOR

Another year has passed and our Nash-Healey Car Club is still going strong. We now have 100 members in the Club as of May 31, 1983 and hopefully this figure will stay the same or increase during the next year. Remember your membership dues are payable now so if you haven't mailed it in yet send it today.

I have received a letter from a member in Tarzana, California and he is a little upset that there isn't a classified section in every newsletter. I haven't purposely omitted this section but the ads are few and far between. When I receive an ad it is published in the next newsletter.

A special plaque is going to be made for Donald Healey and it will be presented to him at the 1983 National in Kenosha, Wisconsin. If Mr. Healey is not there to receive it I will mail it to him in England.

I would like to ask the members who have attended a meet and have given a technical tip during the meeting to send me an article on what they talked about. I am sure the other members in the Club would be interested and perhaps it may help them in restoring or repairing their Nash-Healey's.

I received a note from Ed Moore the other day. He had a good time at the Spring Carlisle Flea Market (Carlisle, PA) and said it was nice to see Ray Soles, Jr., Leonard McGrady, Bruce Sheaffer and a few other Healeyites. Ed is going to be at the flea market in Taunton, MA on June 4th & 5th and any members of the Club going to this meet are welcome to stop and chat either at his flea market space or at his home in Bellingham, Massachusetts.

Again, I want to take this opportunity to thank everyone for their articles during the year and hope this year is as successful.

N A S H
H E A L E Y
N E W S

June 1983
Issue No. 15

THE 1951 NASH-HEALEY : VARIATIONS ON A THEME by Michael Feingold

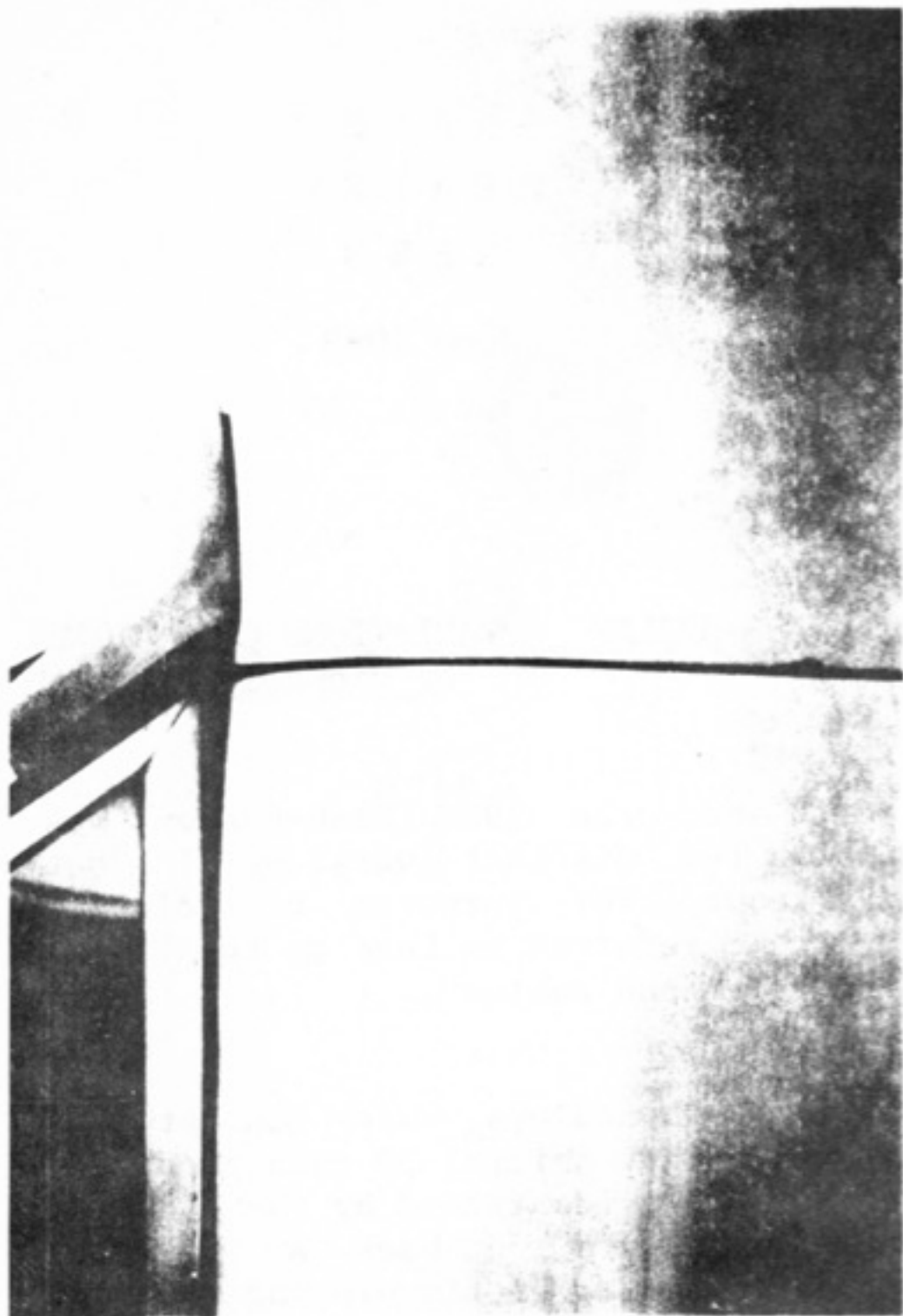
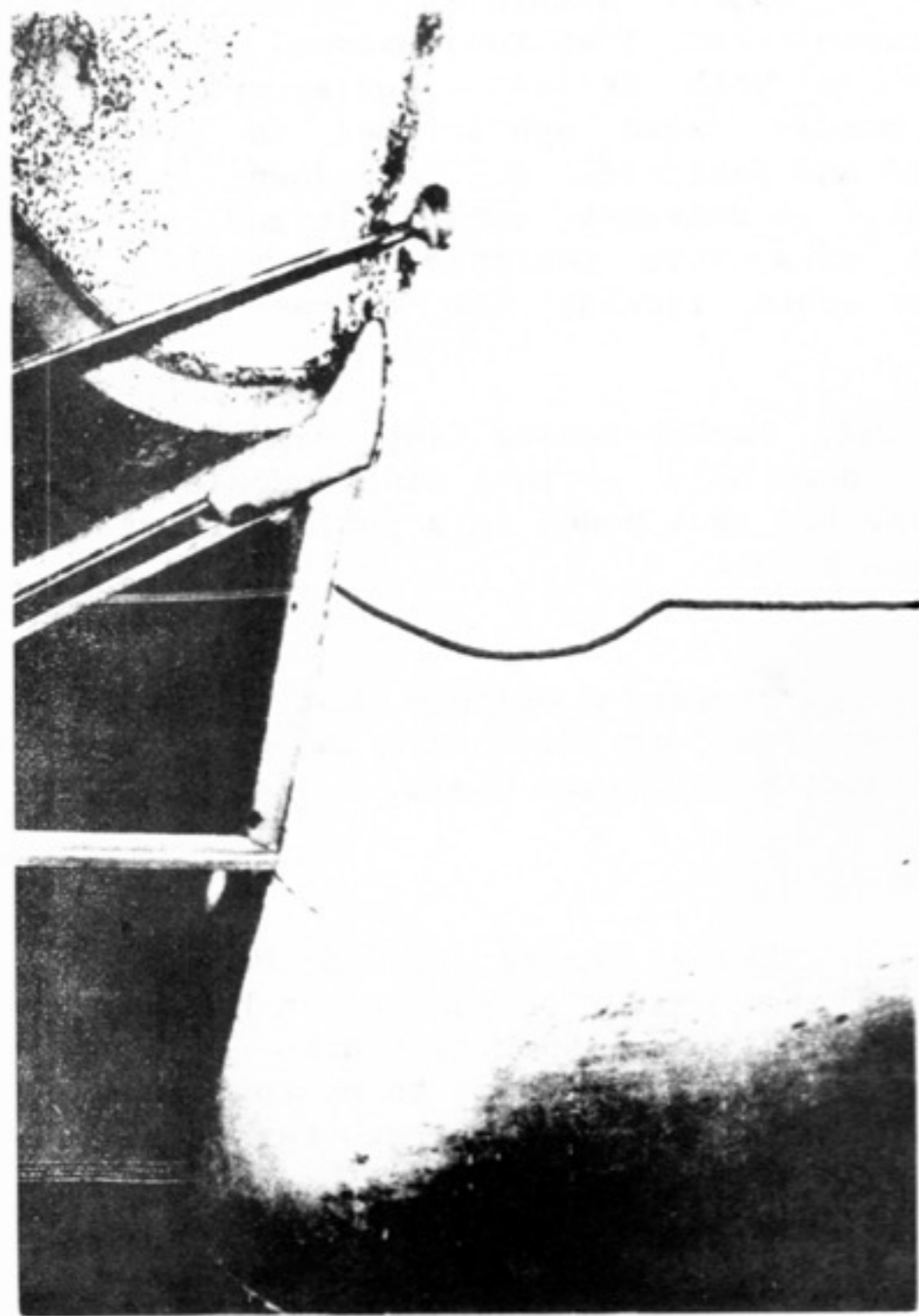
The fact that the 1951 Nash-Healey was produced in two distinct versions is not generally known. For purposes of clarity they will be referred to here as the "first series" and "second series".

First series Nash-Healeys, which consisted of approximately the initial 30 cars produced, are most readily identified by the shape of the doors which are cut back at the upper front corner. Other distinguishing exterior and interior features are shown in the photos on Pages 2, 3, & 4. Note that considerable variation exists within each series as well as between them. Then too, unusual items may appear in both series. For example, most 1951 models were upholstered in genuine leather and featured a fold-down center armrest. In contrast, some first and second series cars were equipped with imitation leather seats lacking the armrest feature.

My friend, Farina-loving Club member Edward Moore, once told me that Donald Healey kept changing the 1951 model in a futile effort to get them right.

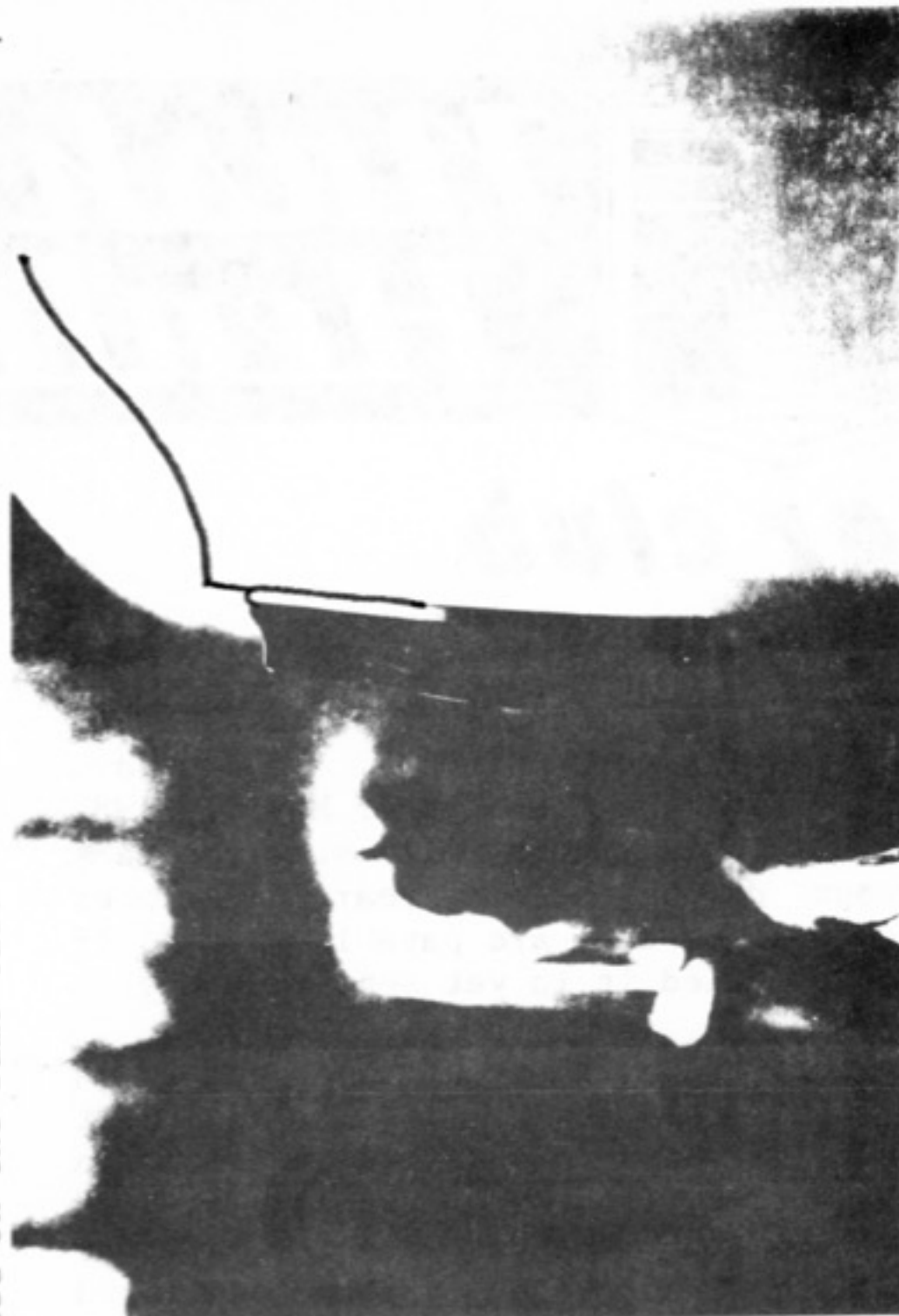
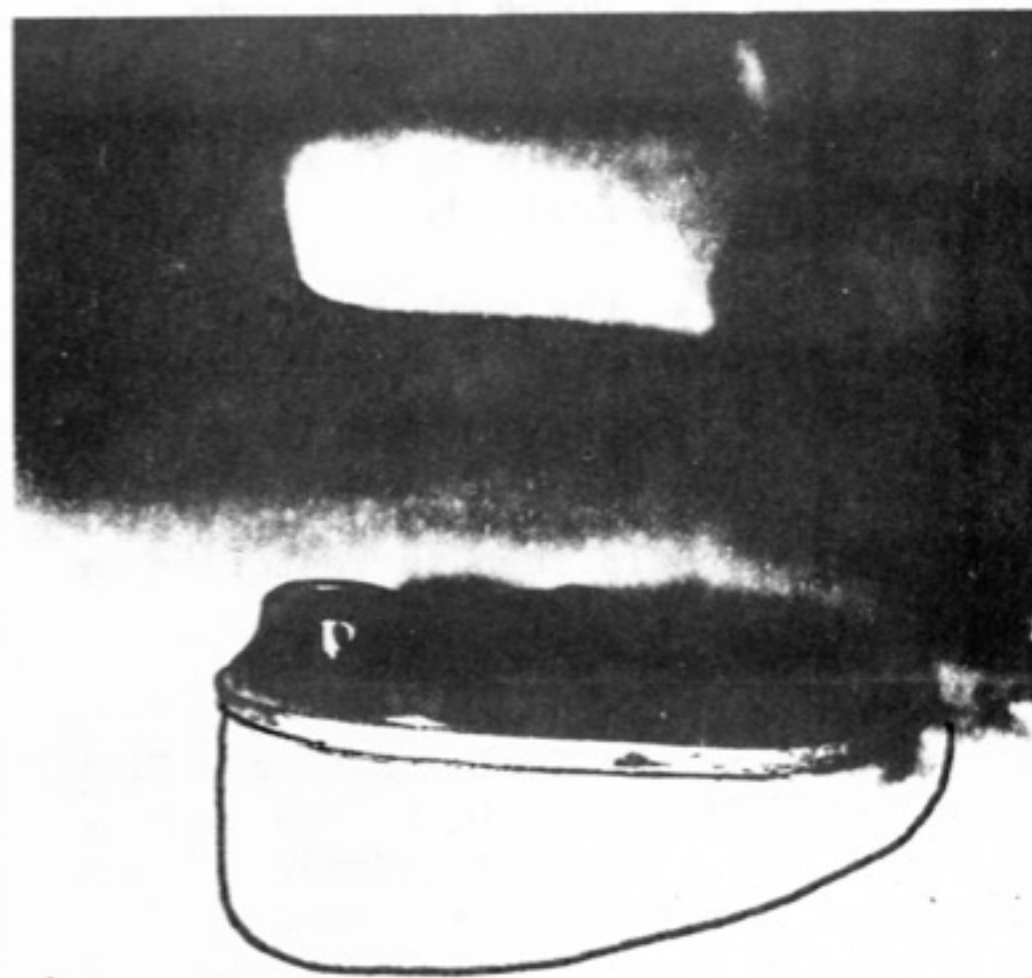
This writer prefers to believe that the myriad variations found on these cars can only serve to enhance their unique charm.

ACKNOWLEDGEMENT: Thanks to Ed Moore for allowing the writer to photograph his Nash-Healey collection. Special thanks to Steve Parsons for taking the time to photograph the unusual features of his first series Nash-Healey.

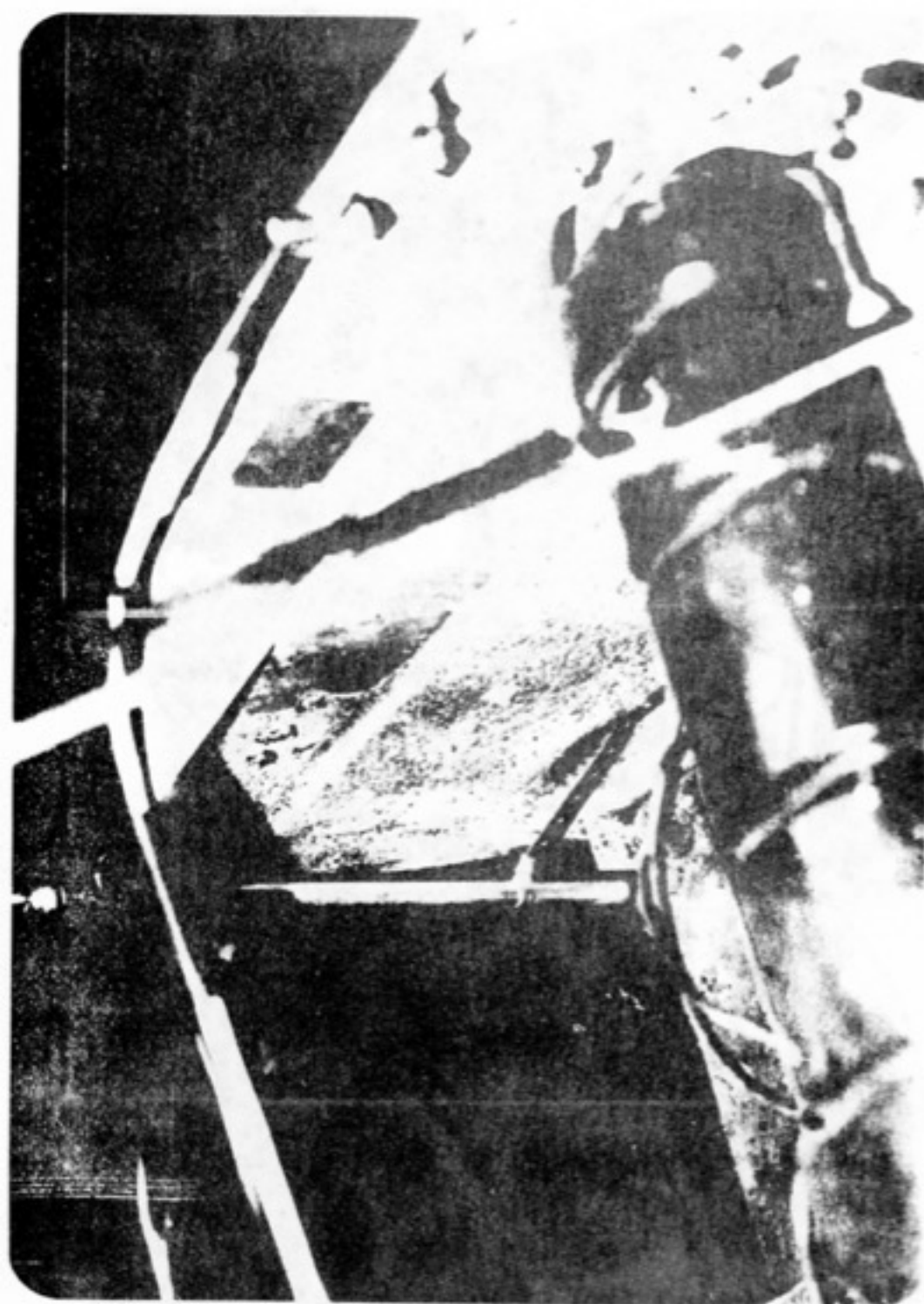


The shape of the first series (left) and second series (right) doors is perhaps the most obvious exterior difference. Most doors were made of aluminum, some were made of steel. In at least one instance one of each type metal was apparently installed on the same car.

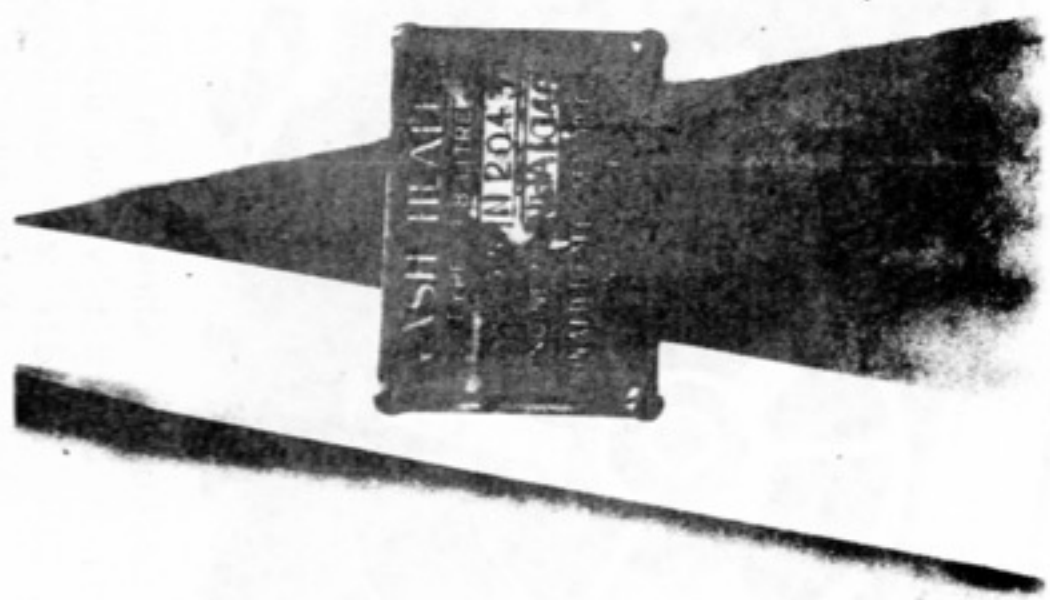
-2-



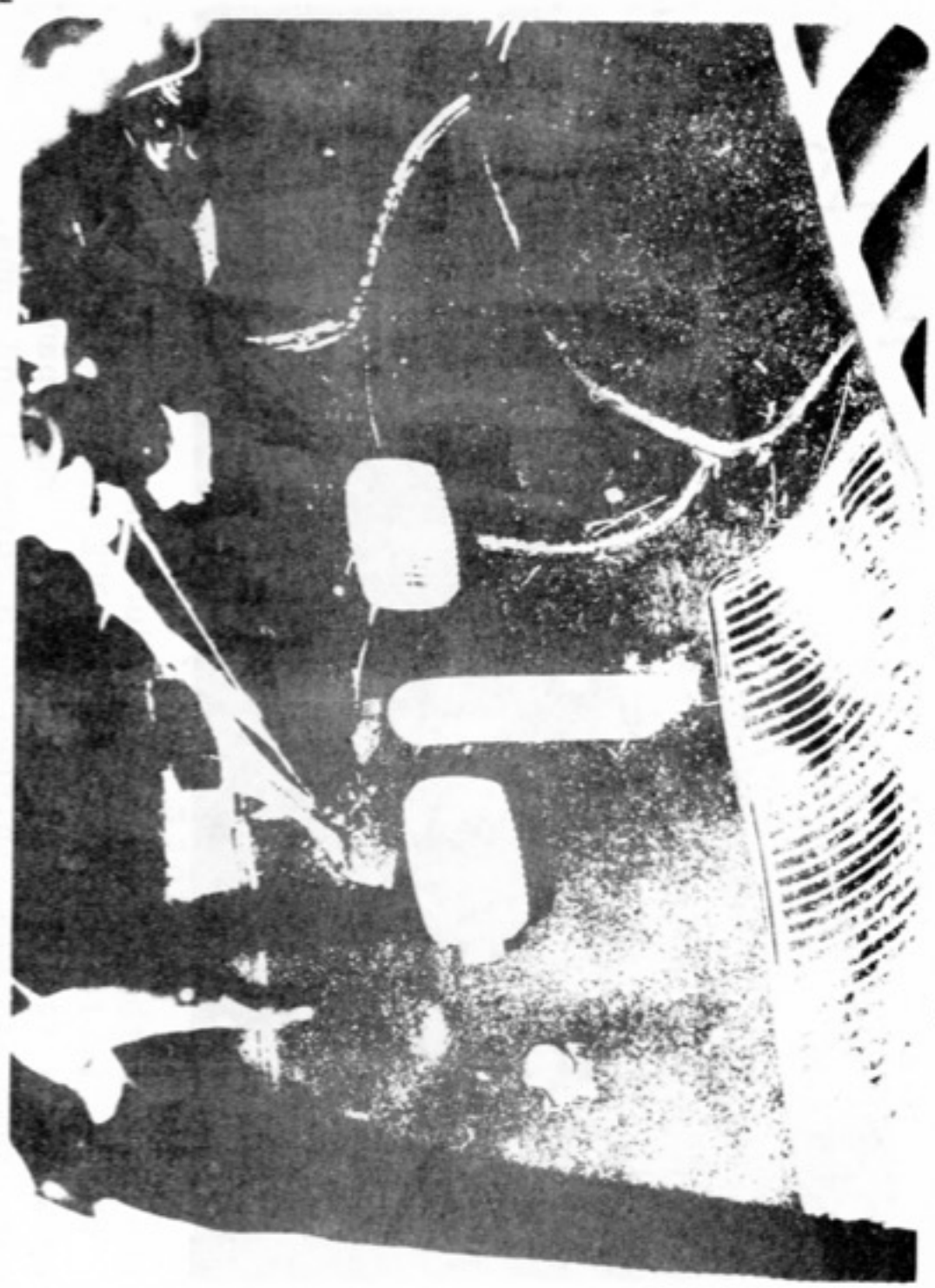
Compare pedestal mounted tail lights of first series (left) with shortened version found on the second series (right).



Vertical firewall of first series (left) provides ample mounting space for brass ID plate. Redesigned firewall of second series (right) tilts sharply inward at top to accommodate heater core mounted behind engine. Battery was moved to right rear side of engine compartment from previous left side location.



Second series ID plate is mounted to the braces on the underside of the hood.



Unconventional pedal arrangement was installed on some early cars.



The features shown on this page were added toward the end of the 1951 model production run. ABOVE: Half-inch thick plywood dash. Hole behind steering wheel is for tachometer. ABOVE RIGHT: Locking trunk lid handle was useful item. BELOW LEFT: Wind-up windows replaced roll-up type. Door panel is not original. Note chrome door stop. BELOW RIGHT: Rear crash pad was finished with chromed end caps. Top of door glass is protected by chromed steel molding.



BRAKE SHOE INFORMATION FOR

NASH-HEALEY
1951
1952-1953-1954

NASH (English)

1960-59, Metropolitan	897-210	897-211
Metropolitan 541 & 542	897-204	897-205

NASH

1957, 5780; 1956, 5680	2030-19	2006-42
1957, 5710, 1956, 5610; 1954, 5440	1251-57	1221-51
1956, 5650	2034-61 or	2012-21 or
	2034-78	2012-31
1956, 5640	2034-61	2012-21 or
		2012-31
1955, 5540	2051-34	2012-21 or
		2012-31
1955, 5500, 5580	2025-19	2006-42
1954, 5460; 1953, 5360; 1952, 5260	2034-61 or	2027-58
	2034-78	
1953-48, 40's	1221-51	1221-51
1951, 5160; 1950, 5060	2027-58	2027-58
1949, 4940 (some)	1215-1	1215-1
1949, 4960; 1948, 4860; 1947, 4760	237-58	237-58
1946, 4660		
1947, 4740; 1946, 600	2011-76	2011-76

Friction Materials Standards Institute, Inc.

RAMBLER (see Hudson and Nash)

1964-60, American	2059-114	2059-114
1964-60, Ambassador; 1963-60, Rebel; 1962-60, Classic 8	2066-78	2012-31
1962, Classic 6	2058-159	2059-158
1961-59, All Sixes	2058-101	2059-100
1959-58, All V-8's	2034-78	2012-31
1959, 5901	2059-5	2059-5
	2059-100	2059-100
	2058-3	2059-5
1958, 5810; 1957, 5710, 5720	1251-57	1221-51
1957 (early)-56, 10's	1221-51	1238-32
1955-54, 10's; 1954-53, 5425, 5428	1237-59	1238-32
1953, 5310; 1952, 5210; 1951, 5110; 1950, 5010		

2034-61 10 2 1/2 33

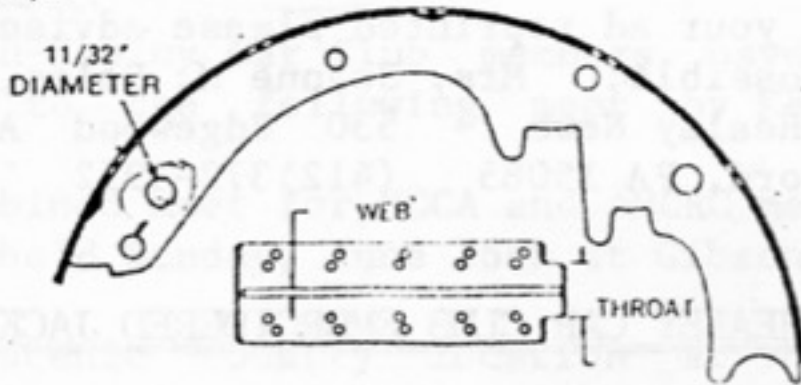
Front--Hudson, 1956-55, Wasp (6's & 8's).
Nash, 1956, 5650, 5640; 1954, 5460; 1953, 5360; 1952, 5260

2034-78 10 2 1/2 33

Front--Hudson, 1956-55, Wasp (6's & 8's).
Nash, 1956, 5650; 1954, 5460; 1953, 5360; 1952, 5260
Rambler, 1959-58, All V-8's.

F.M.S. #61
10 x 2-1/2

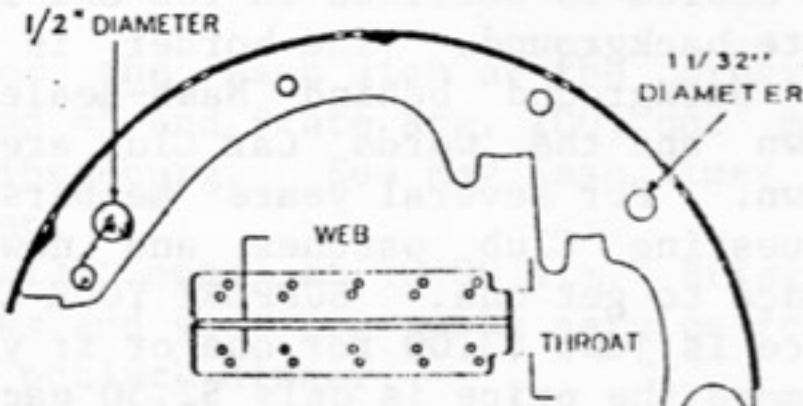
F.M.S. #2034-61



WEB 5/32" THROAT 1-5/32" LOW ANCHOR TYPE
Cannot be used for F.M.S. #78.

F.M.S. #78
10 x 2-1/2

F.M.S. #2034-78
F.M.S. #2066-78



WEB 5/32" THROAT 1-5/32" LOW ANCHOR TYPE
Can be used for F.M.S. #61.

Friction Materials Standards Institute, Inc.

Not on original equipment drawing.

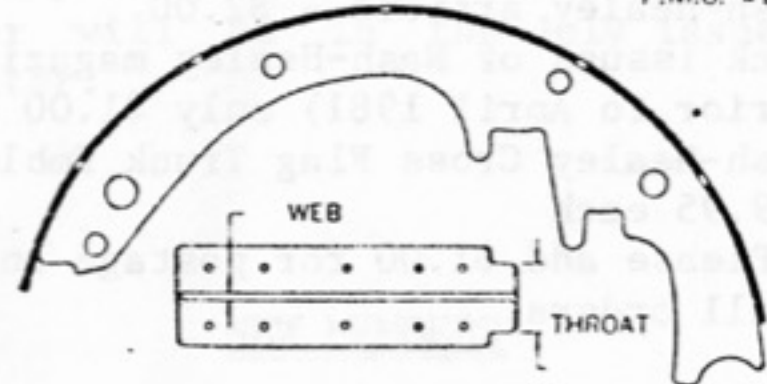
11-82

2027-58 10 2 32

Front and Rear
Nash, 1951, 5160; 1950, 5060.
Rear Nash, 1954, 5460; 1953, 5360; 1952, 5260.

F.M.S. #58
10 x 2

F.M.S. #237-58
F.M.S. #2027-58



WEB 5/32" THROAT 1-9/32" HIGH ANCHOR TYPE

Submitted by Sieg Wroebe

CLASSIFIED ADS

FOR SALE: by Edward Moore - P. O. Box 357 - Bellingham, MASS 02019 (617)966-1433 home or (617)966-9721 business:

- (1) Heavy Duty Blue Streak Points - \$8.70
- (2) Heavy Duty Blue Streak Condenser - \$3.35
- (3) Distributor Cap - \$8.45
- (4) Distributor Rotor - \$2.85
- (5) Carburetor kits for Carter YH Sidedraft \$15.00 each
- (6) Set of six spark plug cover boots \$6.50
- (7) Front Air Deflector, bolts to bumper on Farinas - \$15.00
- (8) Aluminum jack hole plugs for Farinas, unpolished - \$3.00 each

NOTE: Please add 10% for shipping.

FOR SALE: Genuine Nash-Healey head gaskets \$15.00 includes postage: Jack Heisler - 251 Sprucewood St. - Pittsburgh, PA 15210.

FOR SALE: by Richard Kauffman - 100 Church Street - Lakeland, GA 31635:

- (1) Nash-Healey lapel pin or tie tac - \$1.95
- (2) Nash-Healey Leather key case - \$1.50
- (3) Nash-Healey litter bags - 50¢
- (4) Nash-Healey vinyl decals - 50¢
- (5) Reprint of 1953 Nash-Healey Sales Brochure - \$1.50
- (6) Reprint of 1951 Sales Sheet - 50¢
- (7) Original Special Interest Magazine with Nash-Healey article - \$2.00
- (8) Back issues of Nash-Healey magazines (prior to April 1981) only \$1.00 each
- (9) Nash-Healey Cross Flag Trunk Emblems - \$19.95 each

NOTE: Please add \$1.00 for postage on all orders.

WANTED: For 1951 Nash-Healey front chrome to hold plastic to grill: Reggie Nash - 1400 Brook Rd. - Richmond, VA 23220.

WANTED: 1952 or 1953 Nash-Healey roadster. Complete and driveable, rebuildable O.K. I am a hobbist and enthusiast. I am not a collector and will pay a reasonable price: Jim Dapp - 6223 S. 23rd St. - Milwaukee, WI. 53221 (414)761-2035

WANTED: Relay, overdrive kickdown #3136172 & relay, overdrive indicator light #3136173 for 1954 Nash-Healey: Ray Soles, Jr. - 530 Edgewood Avenue - Trafford, PA 15085 (412) 372-3952

CLASSIFIED ADS

WANTED: 1951 Nash-Healey hood, windshield frame; 1953 roadster windshield frame. Will trade new parts or buy outright: Leonard N McGrady - 209 Walnut Lane- Aberdeen, MD 21001

WANTED: I need any shop and repair manuals available so I will know what to do when restoring car. I also need a top & bows and instruments for dash for 1951 Nash-Healey roadster. I would be willing to return any literature loaned to me if I could just be able to copy it. Need sources of parts vendors: Jerome P. Scherber - 5024 71st Avenue North - Minneapolis, MN 55426 (612) 560-4250.

WANTED: Main bearing set for 53 Ambassador (Healey) engine .020 oversize; engine dress up accessories for Ambassador (Healey) OHV size; finned aluminum valve cover and side cover and finned aluminum intake manifold cover; chrome generator and regulator covers: Ed Moore - P.O. Box 357 - Bellingham, MASS. 02019 (617)966-1433 home or (617) 966-9721 business.

REPRINTING OF CLASSIFIED ADS

I am going to reprint ads from the previous newsletters. I will be doing this over the next several newsletters starting with the July issue. If for any reason you do not want your ad reprinted please advise as soon as possible: Mrs. Joanne M. Soles, Editor Nash-Healey News - 530 Edgewood Avenue - Trafford, PA 15085 (412)372-3952

NASH-HEALEY CAR CLUB EMBROIDERED JACKET PATCH

In the last issue of the newsletter the Club advertised for sale 4" embroidered jacket patches. I guarantee you will like them. The emblem is outlined in red and is set on a white background. The border is also red. The background behind Nash-Healey is dark brown and the words Car Club are also dark brown. For several years members have been requesting Club patches and now is your chance to get one. SUPPORT YOUR CLUB. The price is just \$3.00 for one or if you buy two or more the price is only \$2.50 each. Order today from: Mrs. Joanne M. Soles, Editor Nash-Healey News - 530 Edgewood Avenue - Trafford, PA 15085

ND ANNUAL EASTERN SEABOARD AMC FAMILY REUNION
RICHMOND - 1983

WHEN: June 12, 1983, 1:00 p.m.- 5:00 p.m.
(Breakfast meeting 11:00 a.m. at Aunt Sarah's on U.S. Rt. 1 just North of Parham Rd.)

WHERE: Brookland Middle School on Lydell Dr., Henrico County, VA (adjacent to Richmond, VA). Vendor space will be available at Marc Montoni's house.

BRING: You, your family and friends, and a dish for the potluck lunch. Bring any parts you might have to sell. Above all, bring your AMC-related vehicle!! Be it AMC, Renault, Rambler, Nash, Hudson, Kaiser, Frazer, Willys, Jeep, Jeffery, or Nash-Healey!

COST: \$4 per car advance registration donation REQUIRED. Please remit A.S.A.P.

CONTACT: Marc Montoni Reggie Nash
733 Hermitage Rd. or (804)
Richmond, VA 23228 266-4883
(804) 266-0809

ERIE SHORES NASH CAR CLUB OF AMERICA
A.M.C. RAMBLER CLUB

The Nash-Healey Car Club members have been invited to the following meet by Kenneth Havekost.

A combined meet for NCCA and AMCRC members will be held Sunday, June 26th at Gibsonburg, Ohio.

The scenic country location at the Red Rustic Barn in the Bittersweet Nature Preserve, has ample room for our cars to be shown. Bring parts and literature for swapping. There are plenty of activities for the kids.

Look for the Nash sign at the corner of Country Road 65 and State Rte. 200, one mile South of Gibsonburg. See May Nash Times for detailed map.

Gates will open at 10:00 a.m. Bring a dish to pass and your own table service for a 12:30 p.m. potluck dinner.

For more information on this meet at Gibsonburg contact Ken Havekost (313)289-1438 or Bill Wilt (313)242-3207

NASH-HEALEY CAR CLUB
1983 NATIONAL MEET

This is just a brief reminder about the 1983 Nash-Healey Car Club National Meet to be held July 15 thru 17 at the Kemper Center in Kenosha, WI. If you plan to register with our Club please mail in your form (published in the May issue newsletter) as soon as possible along with the money for car registration, tours (except the three-day tour) & banquet tickets. There has been a change in the price for the tour to the AMC plant, it is now \$3.00. If you are a Nash Car Club of America & a Nash-Healey Car Club member you may register with the Club of your choice. I will hold the tickets for the banquet and distribute them at the meet. Please read the schedule on page 8, which gives a detailed account of everything going on for this exciting N.-H.C.C. National & N.C.C.A. Grand NASHional meet.

MEMBERSHIP MEETING - NASH-HEALEY CAR CLUB
NATIONAL MEET

On Friday, July 15 at 3:30 or 4:00 p.m. the Nash-Healey Car Club will hold a brief membership meeting at the Midway Lodge (meet headquarters). We hope all members attending this meet will be available for this meeting. Details of the exact time will be posted at the Midway Lodge during the meet and also a reminder will be in the July issue of the newsletter.

NEW MEMBERS

Richard G. Bundy, Jr. - 55 Thomas Street - Rockville, CT 06066 (203)875-8424 or (203) 872-7800: 1953 Nash-Healey Coupe.

Eugene Ex - 3620 South Melita Rd. - Standish, MI 48658 (517) 846-6583: 1953 Nash-Healey Roadster.

E. L. "Pete" Lamb - #17 Third Street North - St. Petersburg, FL 33701 (813)894-3368: 1951 Nash-Healey Roadster

Jerome P. Scherber - 5024 71st Avenue North - Minneapolis, MN 55429 (612) 560-4250: 1951 Nash-Healey Roadster.

GRAND NASHional HOMECOMING MEET

HOST: UPPER MISSISSIPPI RIVER REGION

CAR SHOW SITE: Kemper Center, 6501 - 3rd Avenue, Kenosha, Wisconsin

DATE: July 15th and 16th

This article is the third in a series of articles regarding the GRAND NASHional in Kenosha, Wisconsin.

For those who are attending this year's Grand NASHional and not familiar with the Kenosha area, a detailed map has been designed for your convenience and is reprinted at the end of this article.

A reminder, if you have not already filled out your pre-registration form that was enclosed in the last issue of TNT, please do so. The deadline for pre-registration is June 30, 1983.

Your 1983 Grand NASHional weekend will be as follows:

Friday, July 15th

10:00 a.m. to 12 noon

Pick up pre-registration packets at Midway Motor Lodge.

1:00 p.m.

AMC plant tour. Buses will depart from Midway Motor Lodge.

7:00 p.m.

General membership business meeting at meet headquarters, Midway Motor Lodge.

Saturday, July 16

7:00 a.m. to 9:00 a.m.

Show cars will be parked at Kemper Center for display to the public. Also, vendor set-up. Price for 10' x 20' vendor space is \$5.00 for members.

10:00 a.m.

Bus will leave Kemper Center with wives and children for the new Grand Avenue Mall in downtown Milwaukee returning to the Midway Motor Lodge at 3:30 p.m. Bus tickets are \$3.00 per person.

3:00 p.m.

People may start to remove their show cars. Show closes to the public.

4:00 p.m.

Pre-banquet attitude adjustment hour, Italian American Club, 2217 - 52nd Street, Kenosha.

6:00 p.m.

Dinner with trophy presentation and program to follow. Banquet tickets \$11.50 per person.

Sunday, July 17th

12:00 noon

Three day pleasure tour of scenic Wisconsin known as the Nash Ramble, headed by Darrell Rader who also provided the following article and itinerary.

1983 NASH RAMBLE

SPECIAL UPDATE:

All of you who have been following the 1983 Grand NASHional are aware of something new, an extended tour to begin on Sunday after the show. Perhaps this will become a yearly happening for those fortunate enough to have the extra time.

All the planning is done. The route, motels and special extras have been set. All we need now is a positive response from those of you who can work it into

your schedule. As I write this, we don't know whether 10 or 100 are coming. We must have firm reservations for rooms or you will be sleeping in your car. (For someone with a 1954 Ambassador that's no problem; however, try to get a good nights rest in a motel or a "28 Special Six")

There has been lots of interest shown in this venture, but in order to make a commitment, you might require some specifics.

ITINERARY:

We leave the Midway Motor Lodge in Kenosha at noon, July 17. A 4 hour drive (three for a Nash-Healey) and a few rest stops should have us at the Don Q Inn in Dodgeville, Wisconsin for our evening meal and night's rest at this very unique motel. The large C-97 aircraft parked outside gives some indication of a "difference". The 110 year old 3 story church steeple is the bridal suite. If you want it, the cost will be \$125 a night. We will walk through an underground passage to get to the dining room.

Next morning we journey 10 miles north to "The House on the Rock." A multi level house billed as an architectural wonder. I call it a modern day Winchester Mystery House. It is only part of the show. I'll spend most of my time looking at the Music of yesterday Museum and other attractions such as steam engines, cannons, carousels, guns and antique dolls. It will take our whole morning.

We will then travel along the Wisconsin River until reaching the Mississippi at Prairie Du Chien. If time allows we will stop by Wyalusing State Park (Wisconsin State Parks are the greatest) before a quiet evening. Wednesday morning, the 19th, will find us touring to Villa Louis, an 1870 mansion with two foot thick walls. Furnishings, books, china, etc. are all from the same period.

A short drive and lunch will find us arriving in Galena, Illinois in the afternoon. Here, the whole town is a museum. Ulysses S. Grant's home is a fine start. Antique shops abound. This will be our last night together. Participants will have the option of staying longer on Wednesday before setting up their own tour "home".

SOME BASIC COSTS:

Don Q Inn	\$49.00
Dinner (Don Q)	\$6.00-12.00
House on the Rock	\$7.00
Other Motels	\$27.00
Chateau Louis	\$3.00
U. S. Grant House	Free

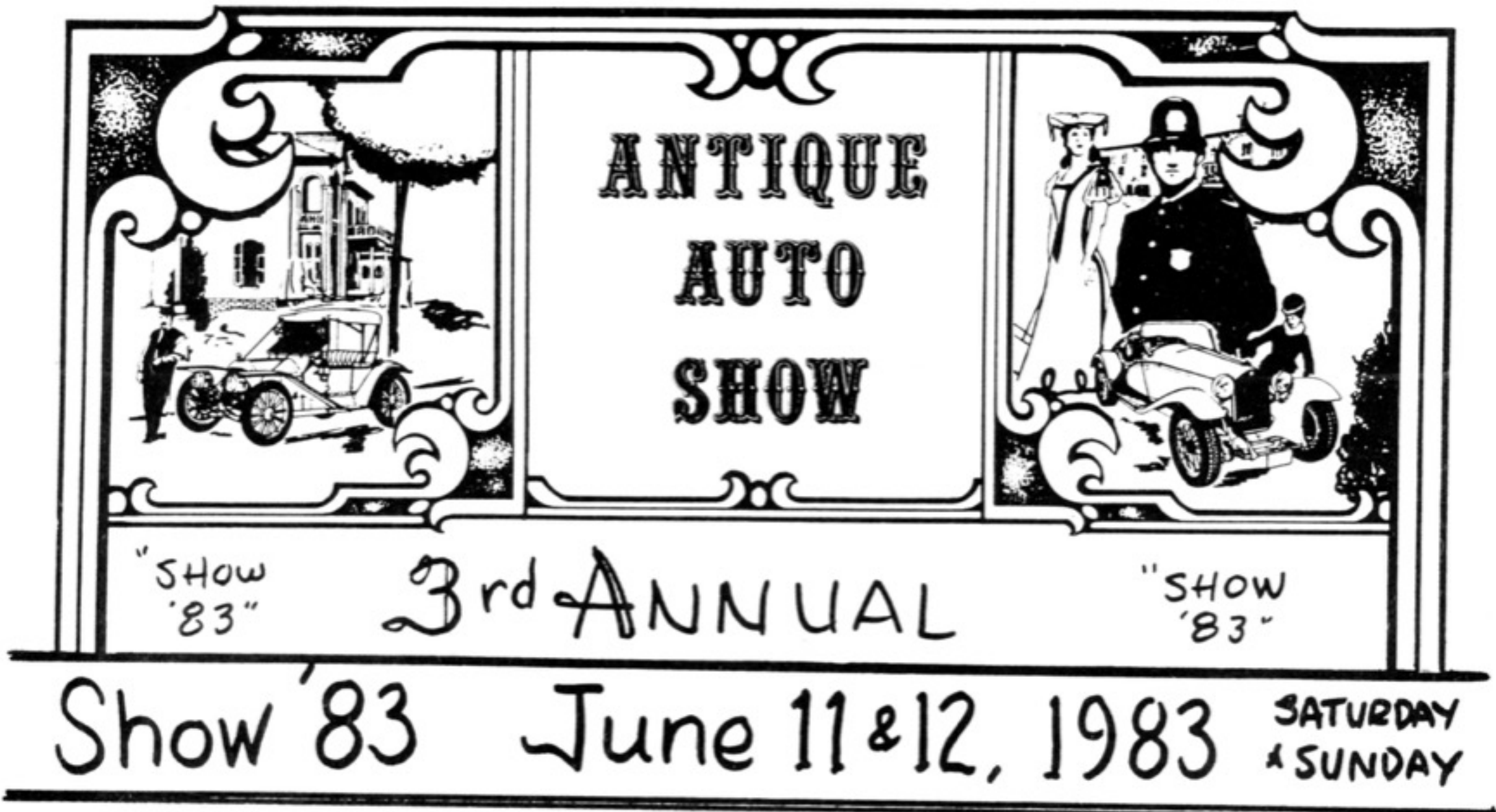
Costs may be negotiated down according to how many are going. You should be able to sleep on your lay down seats if you so desire and save a lot. Complete itinerary and information sheets will be handed out prior to the tour. Again, we must have some assurance you are joining in. Give me a call and then send a \$50.00 deposit. We must have the deposits to the motels by June 1, 1983.

We have planned this as a leisurely, interest filled three days. There will be just over 300 miles of driving and at the moment all evenings are free. Will you join us? Make this vacation one you will remember for the rest of your lives. One made in the company of the greatest people in the world. Nash Folks!

See you with your engine running on the 17th.

Darrell A. Rader
The Old Rambler
815/648-2197

Sturbridge Lions Club....



HOSTED BY:

YANKEE REGION KAISER-FRAZER CAR CLUB and
NASH CAR CLUB OF AMERICA - NORTHEAST REGION

AIR SHOW ALL WEEKEND!!! ** FEATURING ART SCHOLL - WORLD'S BEST AEROBATIC PILOT
*Food Booths * Airplane Rides * Antique Engines * Military Displays * A Full
Weekend of Family Entertainment *

A Dash plaque will be given to the first 150 registrations. This 1983
plaque will be the second in a collector's series. Limited supply of first
series available. Start collecting NOW!!

Cars will be arranged by marque and year. A minimum of five cars by
marque will constitute a class. Judging will be SPECTATORS' CHOICE in each
class. Colored photos of first and second place winners. Less than five
cars by marque will be arranged as follows:

All through 1920's; All 1930's; All 1940's;
All 1950's; All 1960's

ALL CAR CLUBS CORDIALLY INVITED TO PARTICIPATE!!!

Meeting space available by pre-registration only.

ANTIQUE Auto Parts Vendor spaces available: \$10.00

GATES OPEN 8:00 AM ... AIR SHOW STARTS 10:00 AM ...



For more information, contact:
Vincent Bosco
Sturbridge Lions Club
c/o Box 101, Smith Rd.
Charlton, MA 01507

Phone:
248-5389

