



N A S H  
H E A L E Y  
N E W S

May-June 1986  
Issue No. 36

## Car club

NASH-HEALEY ON SCREEN by Mike Feingold

The Nash-Healey has appeared in at least five Hollywood movies and one television series. A videotape library is being compiled from the following list. Upon completion, copies will be made available to Club members on a loan basis.

1. "Susan Slept Here" (1954) A writer (Dick Powell) becomes romantically involved with a juvenile delinquent (Debbie Reynolds) and a socialite (Anne Francis).
2. "The Desperate Hours" (1956) Humphrey Bogart plays the leader of a trio of escaped convicts holding a man (Fredric March) and his family hostage in their home.
3. "The Fast and the Furious" (1954) On her way to a sports car race in a new Jaguar, a woman (Dorothy Malone) becomes involved with an accused killer (John Ireland) being hunted by police.
4. "Sabrina" (1954) To save a business deal, straight-laced executive (Humphrey Bogart) attempts to woo a chauffeur's daughter (Audrey Hepburn) away from his irresponsible brother (William Holden).
5. "On The Beach" (1959) In Australia, the doomed survivors of a nuclear war (Gregory Peck, Ava Gardner, Fred Astaire, Anthony Perkins) live out their final days. During this film's climactic sports car race a flaming 1951 Nash-Healey hurtles off a cliff exploding on impact. Due to the rapid action of this sequence a video recorder having good stop action/slow motion capability is desirable.
6. "Superman" (television series) Clark Kent (George Reeves) may be seen driving a Farina roadster in at least three episodes. Watch for shows with the following titles: "King for a Day", "Clark Kent-Outlaw" (both in color) and one black & white show of whose title I am not certain.

NASH-HEALEY

ENGINES . . . WINDOWS

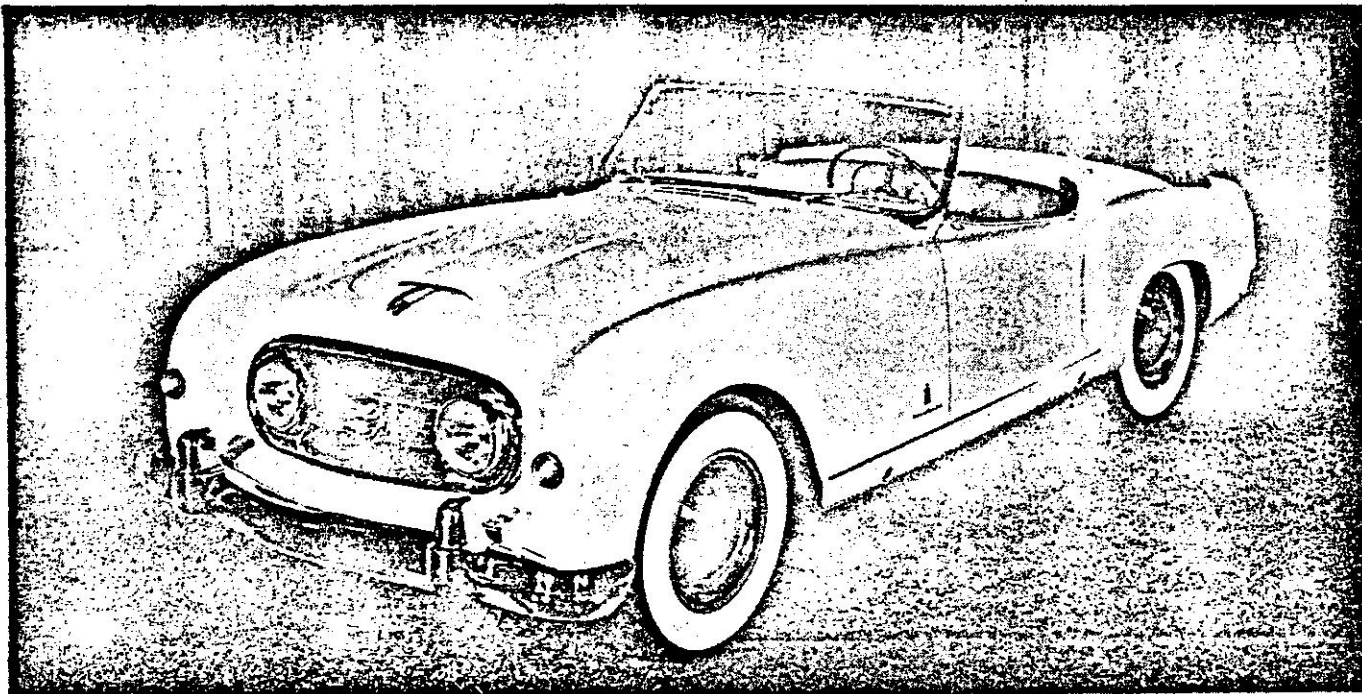
Nash-Healeys with the Donald Healey Company body all had the 3.8-litre engine (or "small six"). A few of the early models with Farina bodies also had this engine. All others were powered by the larger 4.1-litre engine.

The way to tell which engine is in a Nash-Healey is to check the car serial and engine number. If the serial number is under N2250 and if the engine number is below 1163, it is a 3.8-litre engine. If the numbers are higher, the car has a 4.1-litre engine

There were two Nash-Healey body styles. One was the roadster, or convertible. All Healey-bodied Nash-Healeys were roadsters. When bodies were built by Farina, a hardtop was also offered. All Healey-built roadsters had pull-up windows. All Farina-built roadsters had removable window screens. No Nash-Healey roadster was ever built with pull-up or roll-up windows. Roll-up windows appeared only on Farina hardtops.

. . . Carl Chakmakian .  
12-7-66

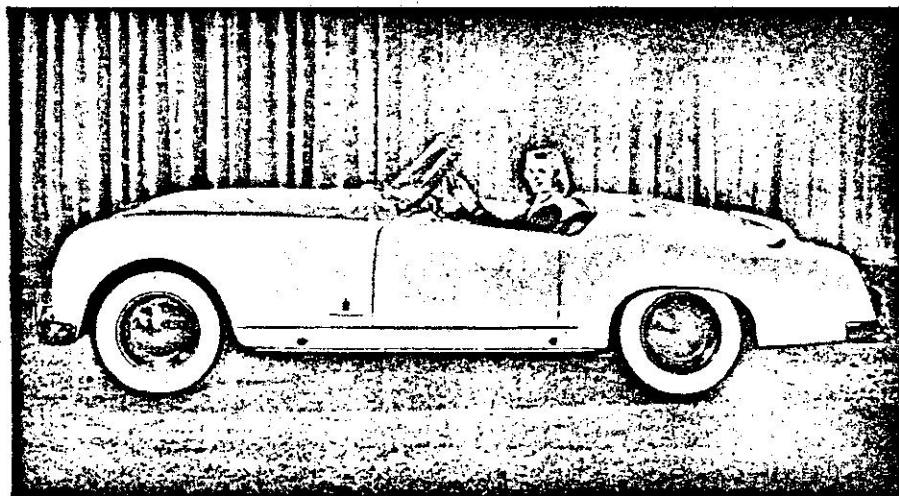
*Editor's Note: A check of the Nash-Healey Newsletter #30 reveals information about the existence of a Nash-Healey roadster with roll-up windows and also a removable hard roof.*



George Karger Photo

Pinin Farina designed the body.

# NASH- Healey



George Karger Photo

The convertible is built on a 102-inch wheelbase.

FOR three consecutive years, the Nash-Healey has placed high among the leaders in the grueling LeMans, France, 24-hour Grand Prix d'Endurance sport car race.

Powered by the Nash Ambassador Dual Jetfire engine, the Nash-Healey took first place in its class and third among all entries during the 19th annual running of the classic in 1952. Previously, the Nash-Healey placed fourth in 1950 and sixth in 1951. It is the only sport car, European or American, to accomplish this feat in LeMans history.

Last year 58 cars started the race and only 17 finished. The Nash-Healey attained an average single-lap speed of 99 MPH and 140 MPH on a straightaway, and ran the entire distance without additional oil, water or mechanical adjustments.

The 1953 model features European custom body styling by Pinin Farina, world famous designer. The power plant is the Dual Jetfire 6-cylinder, overhead valve engine. Equipped with an aluminum cylinder head it develops 140 HP and is fitted with two British S.U. horizontal carburetors and a seven-bearing crankshaft.

Characteristic of Farina design, the front fenders rise above hood line and continue through door panels, affording the driver an excellent view of the road. Engine and major mechanical parts are

factured by Nash motors in this country. Chassis with trailing link front-end suspension is made by the Donald Healey Company, Warwick, England and Farina's plant at Turin, Italy, hand builds the custom bodies.

In addition to the convertible, Nash is placing in limited production a hard top model built on a 108-inch wheelbase with an overall length slightly less than 179 inches. Powerplant and chassis design are the same as in the convertible.

The convertible, built on a 102-inch wheelbase, has a front tread of 54 1/4 inches and rear of 53 inches. Curb weight is 2,600 pounds, road clearance only six inches and turning radius 35 feet.

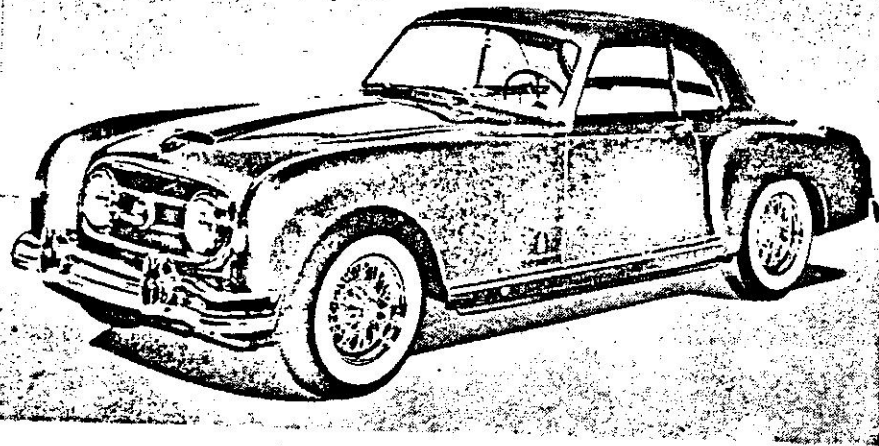
Parking lights, set in the front fenders, also serve as turn signals and the air scoop on the hood is strictly functional. The scoop on the cowl feeds air into Nash's Weather Eye heating and air unit.

The trailing link front suspension incorporating coil springs is matched by coil springs, and track bar in the rear.

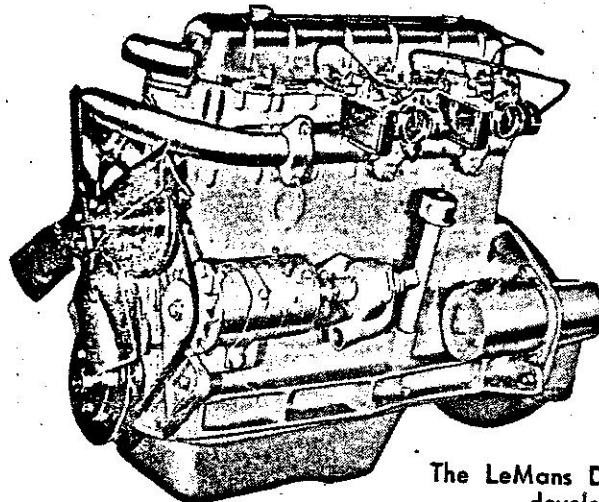
The Dual Jetfire powerplant is coupled with a 3-speed synchro-mesh transmission and overdrive, the shift lever being located on the floor. Overdrive kickdown is controlled by a button in the center of the steering wheel.

The manual top folds behind the seat and the car comes equipped with tight-fitting side curtains. Instrumentation includes a tachometer and the usual Nash dial with speedometer, oil pressure, fuel and water temperature gauges. A blinking light has replaced the ammeter.

Price delivered in New York is approximately \$6,000 for the convertible.



The new hardtop Nash Healey.



The LeMans Dual Jetfire engine develops 140 hp.

## Specifications

### General

	Convertible	Hardtop
Wheelbase (inches) .....	102	108
Overall width (inches) .....	64	64
Overall length (inches) .....	N.A.	178.75
Overall height (inches) .....	N.A.	55
Tread, front (inches) .....	53	53
Tread, rear (inches) .....	54 1/4	54 1/4
Steering ratio .....	N.A.	N.A.
Dry weight (pounds) .....	2600	2970

### Engine

	Convertible	Hardtop
Type .....	OHV6	OHV6
Bore and stroke (inches) .....	3 1/2 x 4 3/4	3 1/2 x 4 3/4
Displacement (cubic inches) .....	252.6	252.6
Compression ratio .....	8.1 to 1	8.1 to 1
Brake horsepower .....	140 at 4000 RPM	140 at 4000 RPM
Taxable horsepower .....	29.40	29.40
Max. torque (lbs. feet at rpm) .....	230 at 2000	230 at 2000
Transmission .....	Synchro-mesh	Synchro-mesh

### Tires

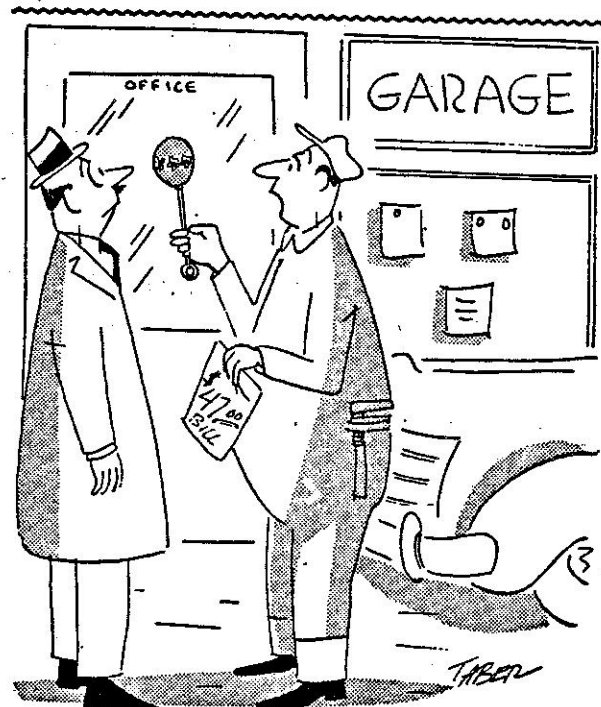
Standard .....	6.40 x 15	6.40 x 15
----------------	-----------	-----------

### Capacities

Oil (quarts) .....	6	6
Water (quarts) .....	N.A.	N.A.
Gasoline (gallons) .....	16	16

N.A.—Not available

☆☆

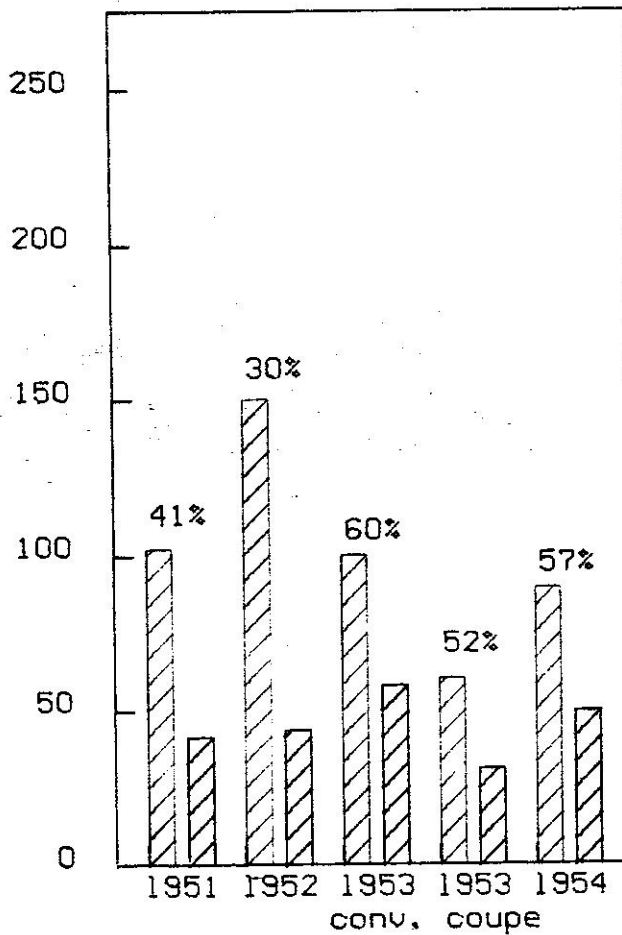


"And this was the rattle you heard!"

Material submitted by Michael Feingold

Nash-Healey Model Year Production Compared With Known Survival Rates

---





AUTHORIZED NASH-HEALEY SERVICE decal  
 15" x 18" As shown in Ed Moore's garage



NASH-HEALEY CAR CLUB  
 BUMPER BADGE



4" NASH-HEALEY CAR CLUB JACKET PATCH



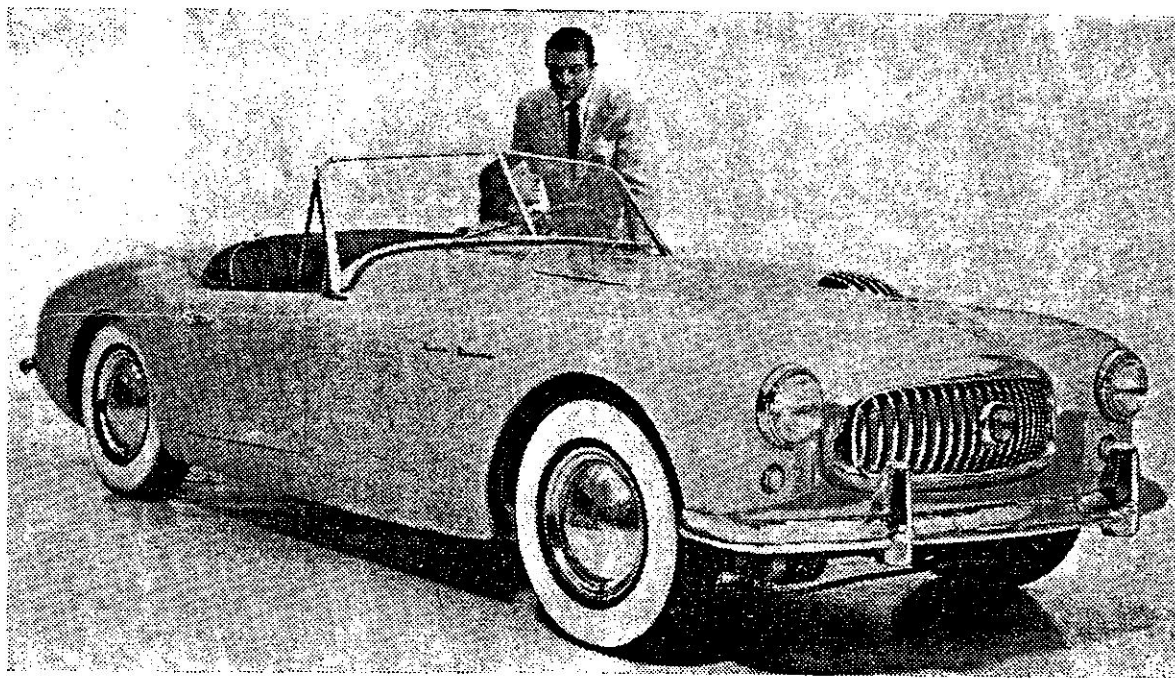
NASH-HEALEY CAR CLUB  
 Lapel-Hat Pin or Tie Tac

Colors on all items except jacket patch are the same as Nash-Healey emblem

FROM:  
Public Relations Department  
Nash Motors Division  
Nash-Kelvinator Corporation  
Detroit 32, Michigan

FOR RELEASE FEB. 15th PM'S OR LATER

## New 'Nash Healey' Sports Car

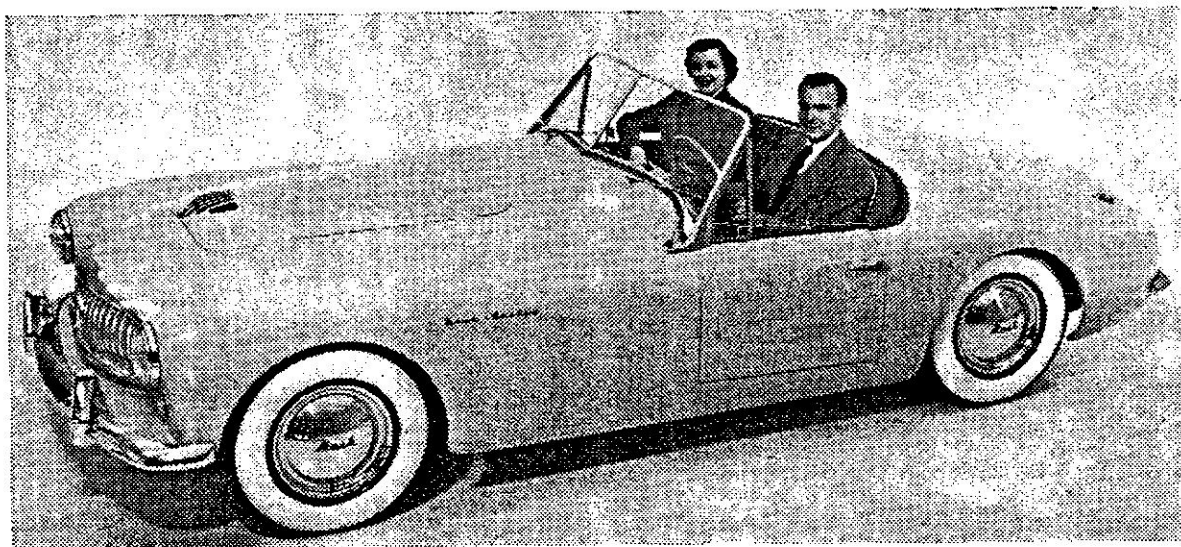


Nash Motors' new Nash Healey 2-passenger sports car features European sports car styling. Its distinctive front end appearance is achieved by clean functional design with broad low hood and car-long horizontal body lines flowing gracefully from front to rear. The front grille follows the design of the familiar Nash "Airflyte" chrome barred racing air scoop. Powered by the equally new "Dual Jetfire" Ambassador engine, it has an estimated speed of 125 mph. Production of the new car will be limited, according to Nash Motors. The Nash Healey represents the combined skills of Nash Motors, U.S.A., and the Donald Healey Company of Warwick, England.

FOR RELEASE FEB. 15th PM'S OR LATER

FROM:  
Public Relations Department  
Nash Motors Division  
Nash-Kelvinator Corporation  
Detroit 32, Michigan

## Sports Car Offers Power, Style, Beauty



Fast, low and racy, Nash Motors' new 1951 Nash Healey is a 2-passenger sports car featuring latest automotive engineering advances and European styling. Powered by the equally new "Dual Jetfire" Ambassador engine, the low slung automobile stands 38 inches from road to hood top. Highly distinctive front end appearance is achieved by clean functional design with a broad low hood and car-long horizontal body lines that flow gracefully from front to rear. It has an estimated speed of 125 mph. Production will be limited, according to Nash Motors. The Nash Healey represents the combined skills of Nash Motors, U. S. A., and the Donald Healey Company of Warwick, England.



NASH-HEALEY CAR CLUB Club Store Items  
ORDER FORM

- \*\*NEW\*\* Authorized Nash-Healey Service Decal \$10.00  
15" x 18" Beautiful (includes postage)
- \*\*NEW\*\* Nash-Healey Car Club Bumper Badge \$ 6.00  
(includes postage)
- \*\*NEW\*\* Nash-Healey Car Club Lapel-Hat Pin \$ 4.00  
(includes postage)
- \*\*NEW\*\* Nash-Healey Car Club Tie Tac \$ 4.00  
(includes postage)
- 4" Nash-Healey Car Club Jacket Patch \$ 3.00  
(includes postage)

SEND ORDER FORM INCLUDING REMITTANCE TO:

Nash-Healey Car Club  
530 Edgewood Avenue  
Trafford, PA 15085

NAME: \_\_\_\_\_

ADDRESS: \_\_\_\_\_

QUANTITY \_\_\_\_\_

- Authorized Nash-Healey Service Decal \_\_\_\_\_
- Nash-Healey Car Club Bumper Badge \_\_\_\_\_
- Nash-Healey Car Club Lapel-Hat Pin \_\_\_\_\_
- Nash-Healey Car Club Tie Tac \_\_\_\_\_
- 4" Nash-Healey Car Club Jacket Patch \_\_\_\_\_

Total Amount Enclosed: \_\_\_\_\_

NASH-HEALEY CAR CLUB Club Store Items  
ORDER FORM

- \*\*NEW\*\* Authorized Nash-Healey Service Decal \$10.00  
15" x 18" Beautiful (includes postage)
- \*\*NEW\*\* Nash-Healey Car Club Bumper Badge \$ 6.00  
(includes postage)
- \*\*NEW\*\* Nash-Healey Car Club Lapel-Hat Pin \$ 4.00  
(includes postage)
- \*\*NEW\*\* Nash-Healey Car Club Tie Tac \$ 4.00  
(includes postage)
- 4" Nash-Healey Car Club Jacket Patch \$ 3.00  
(includes postage)

SEND ORDER FORM INCLUDING REMITTANCE TO:

Nash-Healey Car Club  
530 Edgewood Avenue  
Trafford, PA 15085

NAME: \_\_\_\_\_

ADDRESS: \_\_\_\_\_

QUANTITY \_\_\_\_\_

- Authorized Nash-Healey Service Decal \_\_\_\_\_
- Nash-Healey Car Club Bumper Badge \_\_\_\_\_
- Nash-Healey Car Club Lapel-Hat Pin \_\_\_\_\_
- Nash-Healey Car Club Tie Tac \_\_\_\_\_
- 4" Nash-Healey Car Club Jacket Patch \_\_\_\_\_

TOTAL AMOUNT ENCLOSED: \_\_\_\_\_