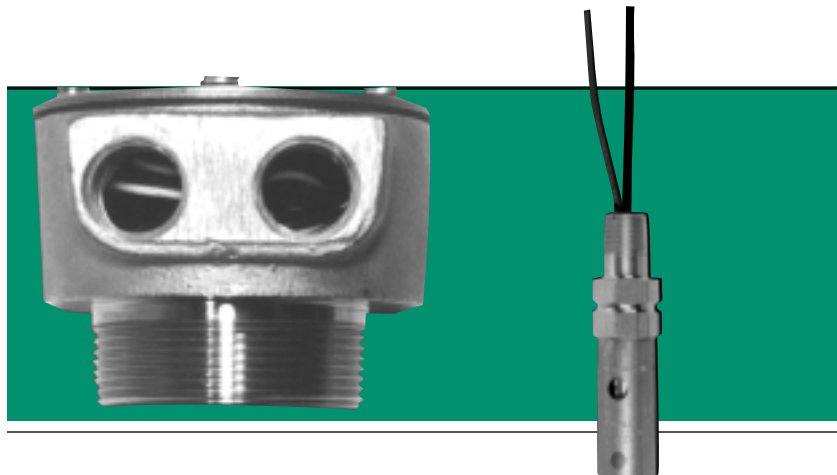


Stainless Steel Thermistor Sensor

Liquid Level Detection and Overfill Protection for the Chemical Industry



SP-MHC (SS) Holder

SP-BLU (SS) Sensor Tip

Scully Stainless Steel Thermistor Sensor are part of an automatic and continuous self-checking system you can count on. Scully Thermistor Sensors offer these advantages:

- Maximum safety with Dynacheck® - automatic and continuous self-checking circuitry - when used with Scully Rack Controls.
- Versatile point liquid level sensing in storage tanks, tank trucks and other applications.
- AISI 316 stainless steel construction used to resist corrosion.
- Functions within a wide range of ambient temperatures in a variety of liquid chemicals.
- Dependable solid state construction.

Description

The Stainless Steel Thermistor Sensor is designed for liquid chemical overfill prevention and point level detection. It is used in storage tanks, tank trucks and other vessels during loading operations.

Two models are available for different climate/product operating conditions; the SP-BLU(SS) for mild ambient temperature operation and unheated product, and the SP-BLH(SS) for heated product.

On tank trucks, the SP-BLU(SS) sensor is compatible with the Biclops Rack Control Monitor. Both sensor models are compatible with the single point ST-15 Rack Control Monitor.

In tank farms, multiple storage tanks are protected with either sensor model using a ST-15-WX or ST-12 control monitor to provide individual alarm and relay outputs for each sensing point. See back for compatible control monitor data sheets.

Safety

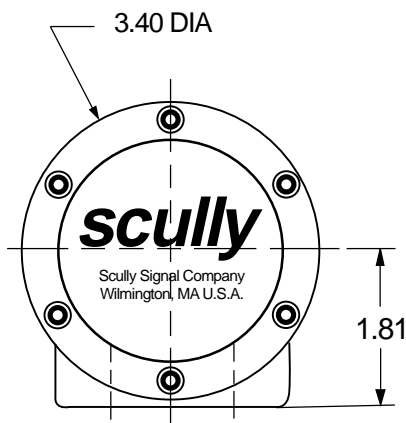
The stainless steel thermistor sensor incorporates Scully's unique and exclusive Dynacheck® circuitry when connected to Scully monitoring equipment. Using pulsed signals which simulate a wet or "unsafe" condition, the monitor automatically and continuously checks the entire system operation; controller, wiring, connectors and sensors, for faults 30 times per second. If liquid comes in contact with the sensor, or in the event a fault occurs, the pulsed signals cease and the monitor signals for immediate shutdown of the loading operation. No operator involvement is needed!

Sensor Holder

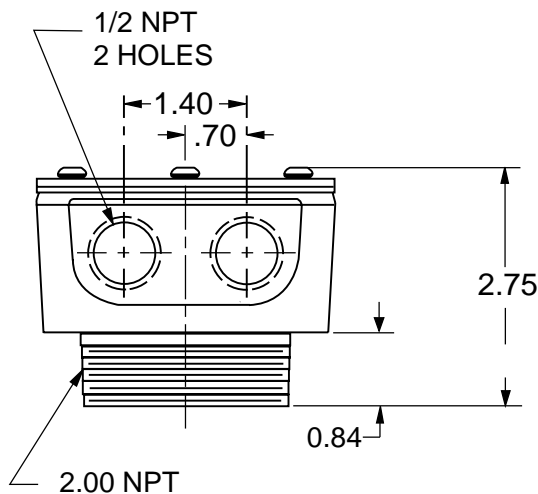
The Scully SP-MHC(SS) sensor holder is designed for mounting in a 2" NPT tapping. This allows for convenient mounting in both storage tanks and tank truck vehicles. The fixed-length stainless steel sensor threads into the holder using a 3/8" X 1/4" reducing coupling and the appropriate length of 3/8" stainless steel pipe. Consult Scully for assistance.

Setting New Standards In Safety

All Dimensions In Inches

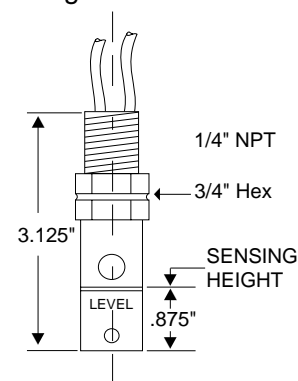


SP-MHC(SS) Holder
Top View



SP-MHC(SS) Holder
Side View

#18 AWG.36"
Long 2-WIRES



SP-BLU(SS) Sensor Tip
Side View & Sensing Level

Technical Specifications

Temperature Range:	SP-BLU -40° to +120° F (-40° to +48°) C. SP-BLH 0° to +200° F (-18° to +93°) C.	Exposed Materials:	316 Stainless steel, glass sensing element and teflon seal.
Product Range:	Group D hazardous materials and non-hazardous materials which are compatible with thermistor sensing technology. Consult the factory with specific questions.	Level Repeatability:	+/- 1/16"
Detection Level:	Fixed, refer to diagram. The sensor may be adjusted to any length using 3/8" stainless steel pipe and a 3/8 x 1/4" reducing coupling. Should be set slightly above each compartment's maximum capacity level weights and measures marker.	Electrical Leads:	Five color coded, 36" Teflon covered long leads.
		Size:	Refer to diagram.
		Weight:	Sensor Tips; 3.7oz. (.104gs.) Holder; 2.8 lbs. (1.27 kg.)
		Compatible	
		Control Monitors:	ST-15, ST-15WX, ST-12

Scully stainless steel optic sensors are approved for use in Class I, Division 1. Group C&D hazardous locations by Factory Mutual Research and the Canadian Standards Association as part of an intrinsically safe system

Ordering Information

Description	Part #
SP-BLU(SS) Stainless steel thermistor sensor only	07837
SP-BLH(SS) Stainless steel thermistor sensor only for heated product	07836
SP-MHC(SS) holder assembly with 3/4" NPT thread, no sensor	08585
3/8" X 1/4" Stainless steel reducing coupling	50746
Replacement sensor holder cap	31605
Replacement sensor holder gasket	31606

Biclops, Dynacheck, Dynamic Self-Checking, Dynamic Self-Test, Faylsafe, Intellicheck, Intellitrol, Intelliview, Load Anywhere, Maxsafety, MulteCept, Scully, Scultrol, Scul-Lock, Scul-Tel, Scul-Tite, TABS and V.I.P. are registered trademarks of the Scully Signal Company. Specifications are subject to change without notice.

Worldwide Contact
Scully Signal Company
70 Industrial Way
Wilmington, MA 01887 USA
Tel: 1-800-272-8559 or (617) 692-8600
Fax: (617) 692-8620
email: sales@scully.com
www.scully.com

