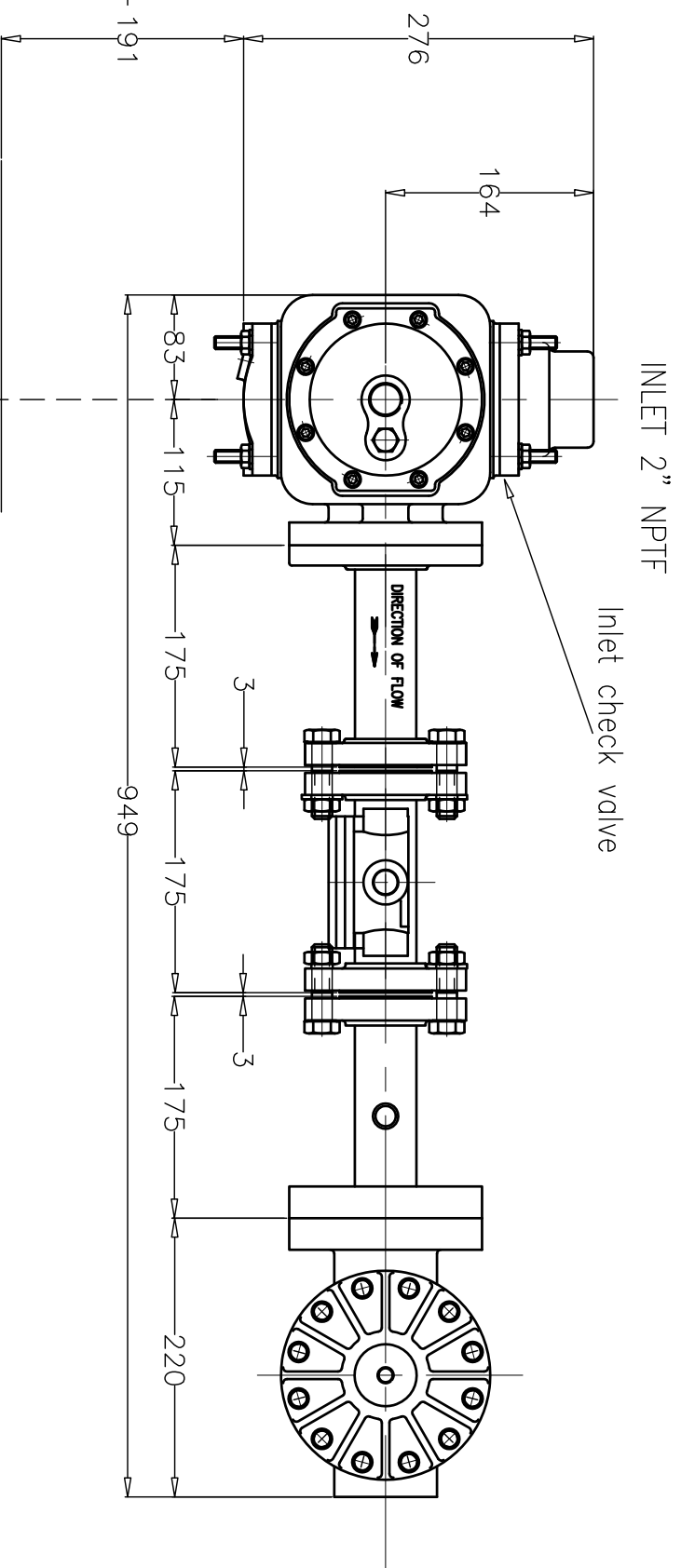


Strainer/Vapour Eliminator Inlet and Outlet may be interchanged to suit installation as required.

Minimum access required for removal of strainer basket



Clearance required for removing float

127

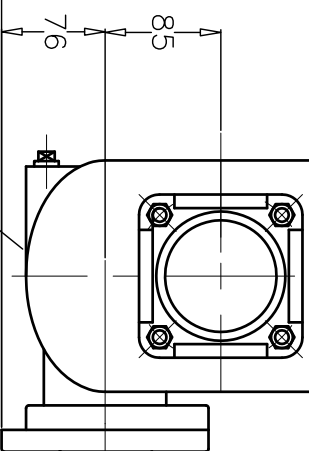
20mm NPT must remain 20mm back to Vapour Space.

To Vopour Space →

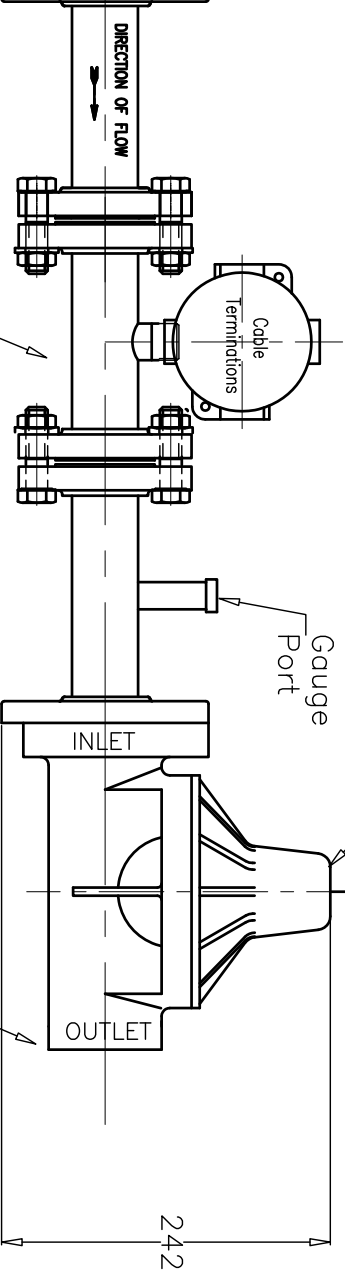
NOTE: The inlet strainer/vapour eliminator and pressure differential valve may be located at other points in the piping circuit.

Installation in compliance with NMI 10-2-6A

466



Liqua-Tech VE 2
L.P. Gas Vapour Eliminator



Liqua-Tech VE 2
L.P. Gas Pressure Differential Valve

1/4 to 3/8 Pipe

Discharge 2" NPTF

Acme VTM 150 Turbine Meter

Rev.	Item	Date	Signature	Checked
5	Updated pipe lengths	05-12-13	SMB	
4	Downstream pipe dimension changed from 190 to 175	30-11-99	g.t.p.	
3	Added dimensions for meter	30-11-99	g.t.p.	
2	Note re USA installation added	13-3-98	w.j.m.	
1	Redrawn to suit existing jigs	4-9-97	w.j.m.	
	Revision note			

Item	Quantity	Description, material, dimension etc.	Reference
Drawn	S.M.B.	Checked	Approved by
Title		Filename	Date
METERING SYSTEM - VTM 150		vtm150LT	22-10-96
Drawing number		Revision	Sheet
VTM 150 LT		5	1 of 1



ø40 TURBINE METER
METERING SYSTEM - VTM 150