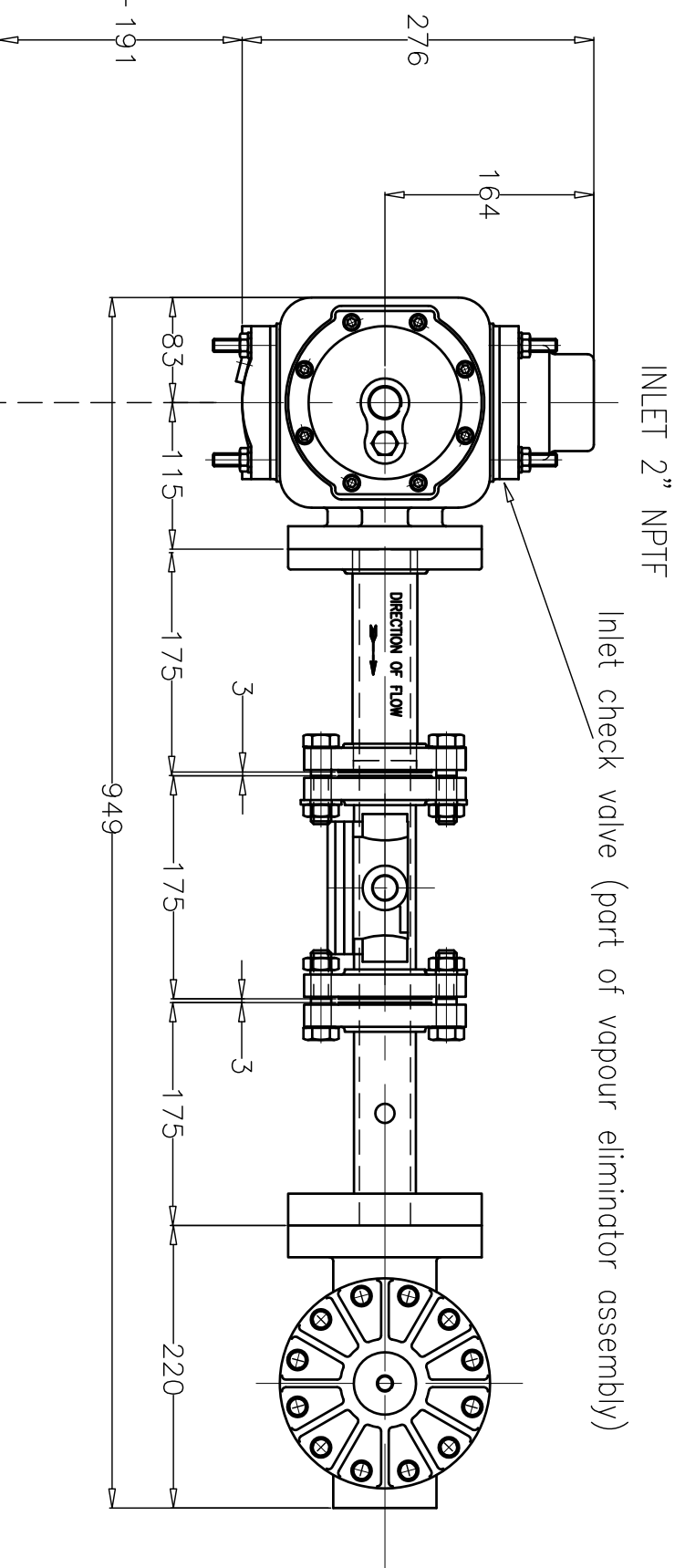


Strainer/Vapour Eliminator Inlet and Outlet may be interchanged to suit installation as required.

Minimum access required for removal of strainer basket

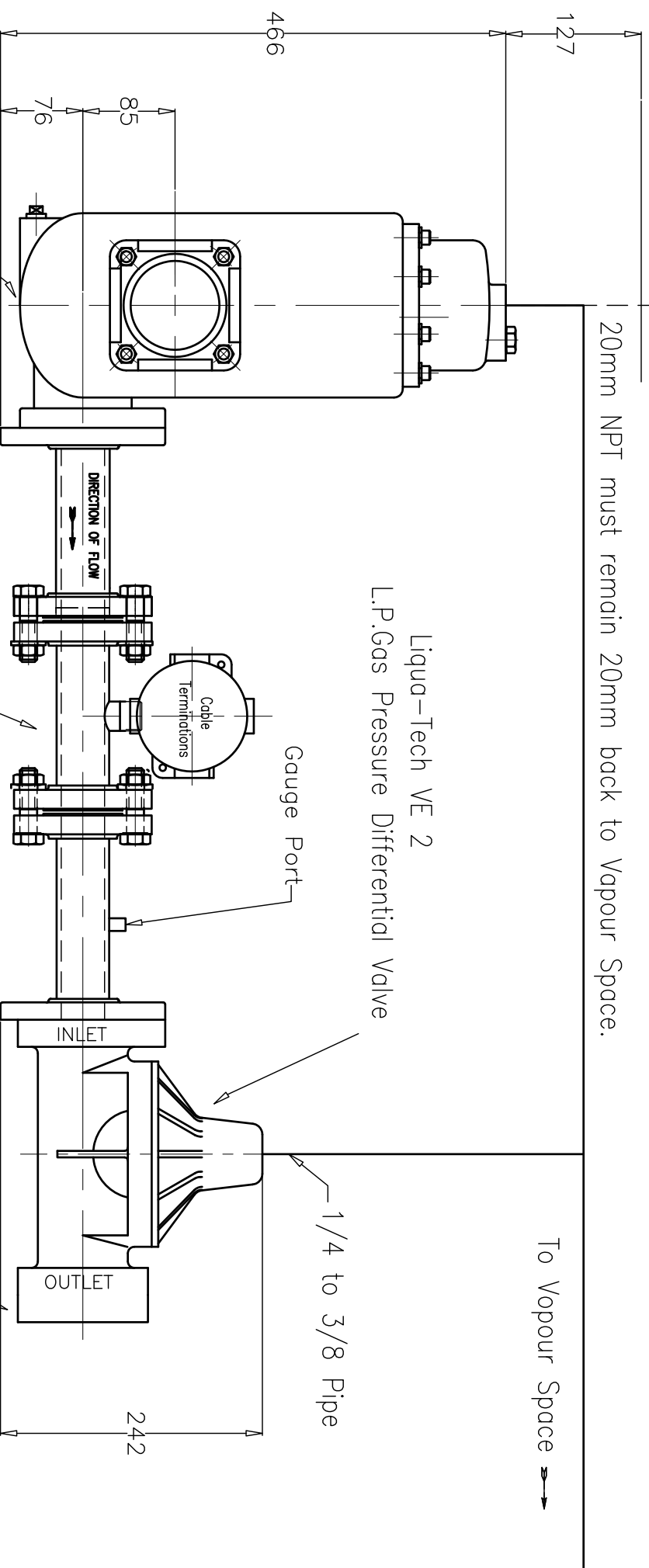


Clearance required for removing float

20mm NPT must remain 20mm back to Vapour Space.

NOTE: The inlet strainer/vapour eliminator and pressure differential valve may be located at other points in the piping circuit but the straight length incorporating the upstream flow straightener, the meter and the downstream pipe immediately following the meter must not be interrupted. Installation in compliance with NMI 10-2-6A

Liqua-Tech VE 2  
L.P.Gas Vapour Eliminator



Acme VTM 200 Turbine Meter

Rev.				
Rev. 1	Shorten flow straighteners to 175	10/10/2014	SMB	LV
Rev.	Revision note	Date	Signature	Checked

Item	Quantity	Description, material, dimension etc.	Reference
Drawn S.M.B.	Checked	Approved by	Filename vtm200LT
Title METERING SYSTEM - Liqua-Tech components			Date 02-12-2010
Drawing number VTM 200 LT			Revision 1
			Sheet 1 of 1

